













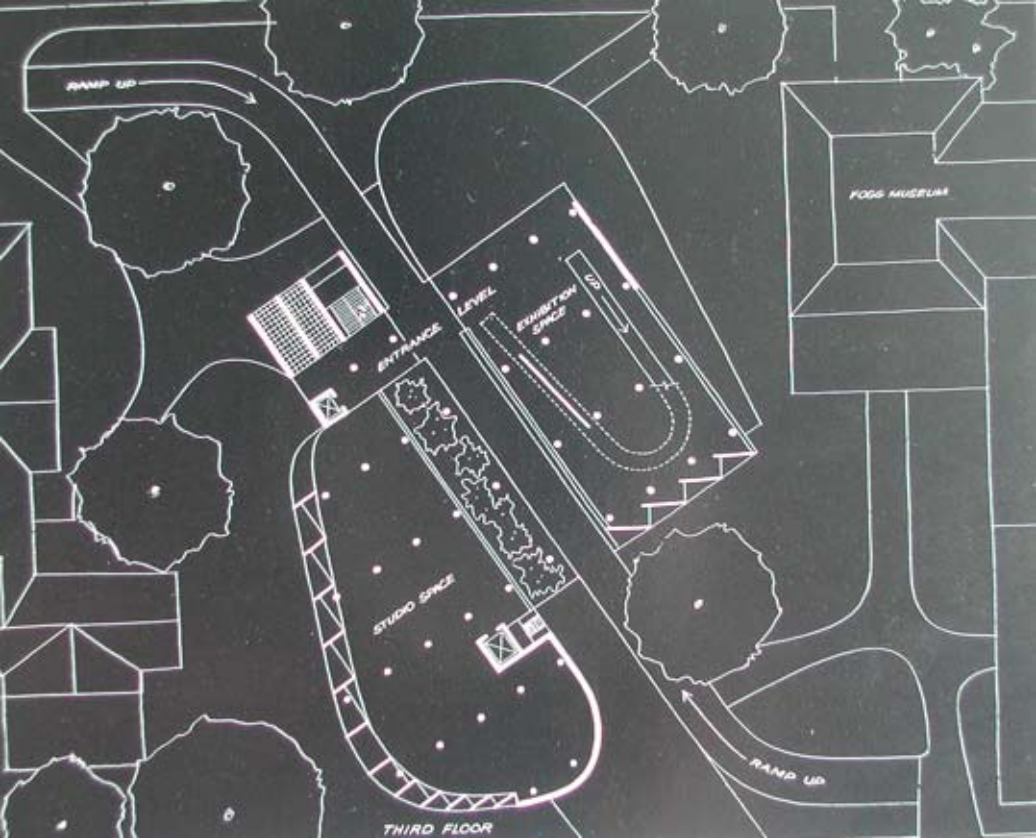
UC

QUINCY

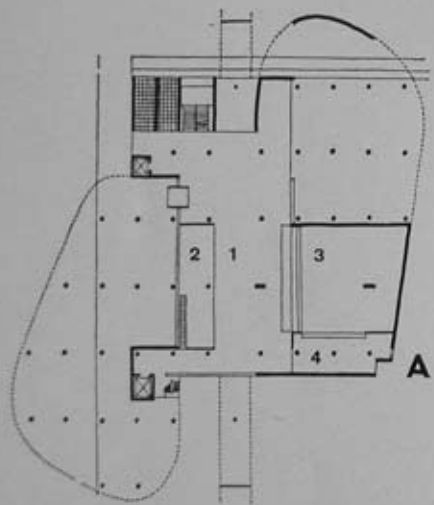
PRESCOTT

HARVARD

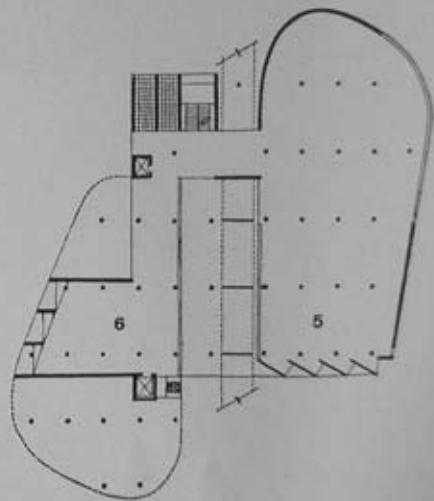
BROADWAY



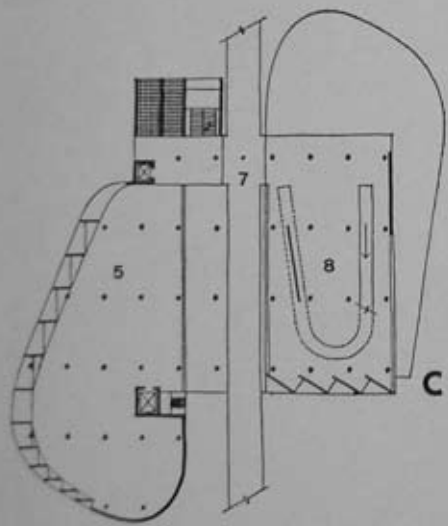




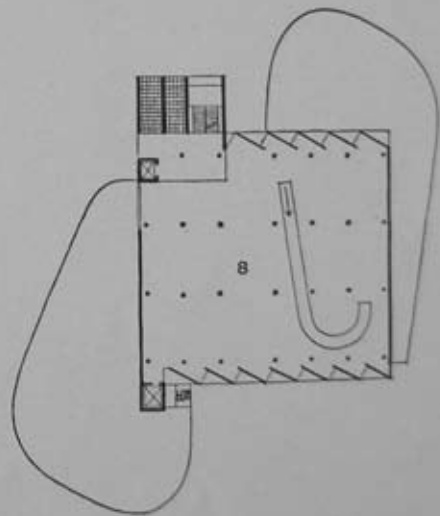
Rez-de-chaussée



1<sup>er</sup> étage



2<sup>e</sup> étage



3<sup>e</sup> étage





















*Le Corbusier*



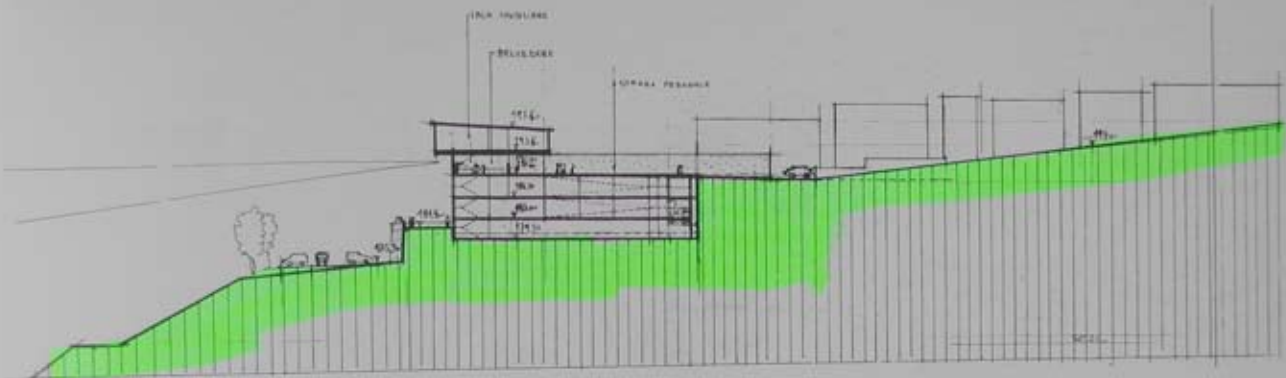


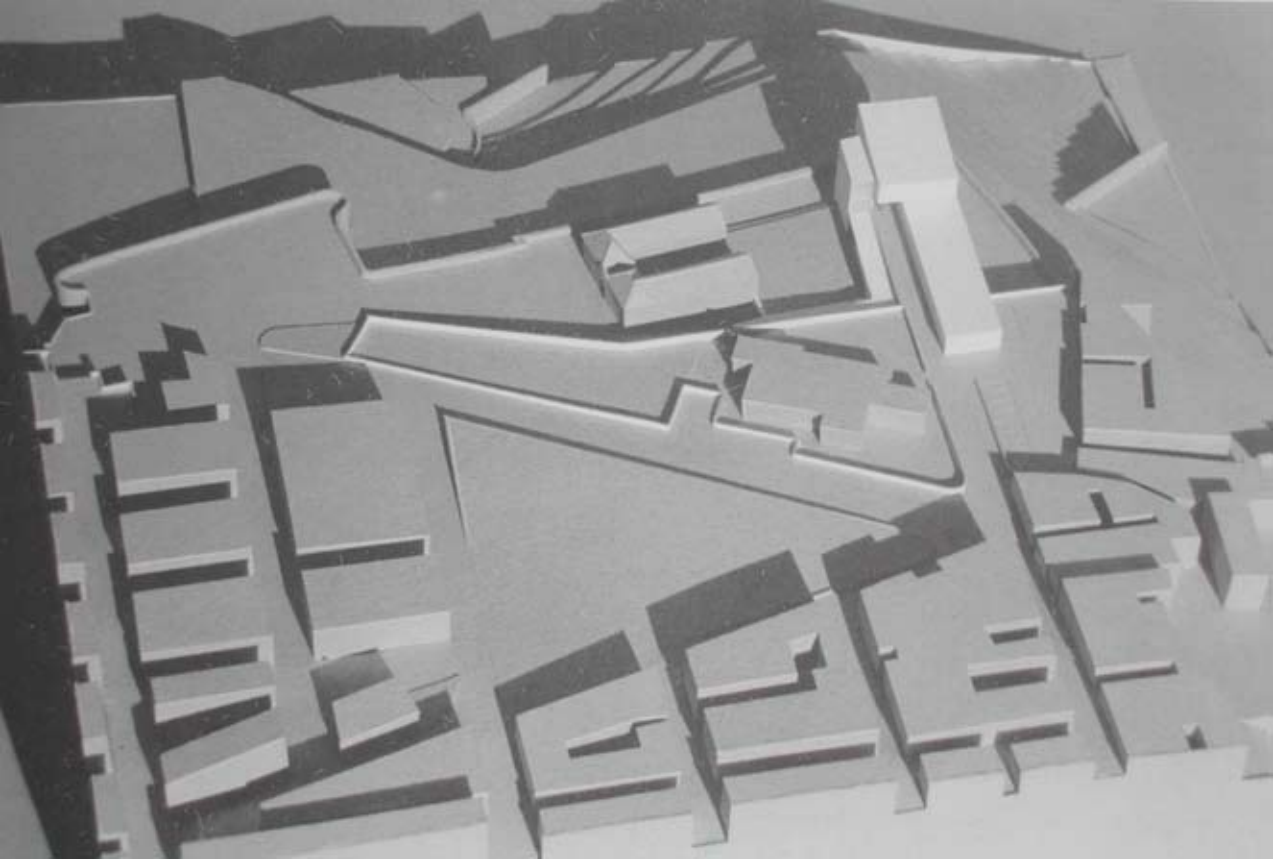


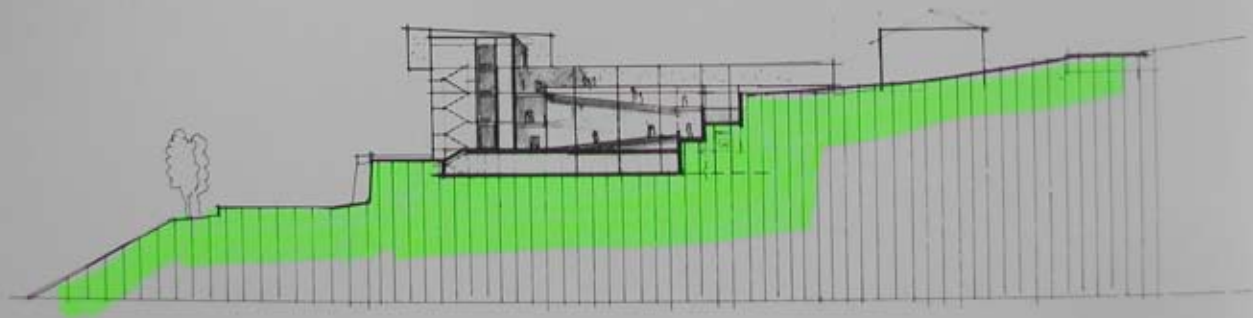
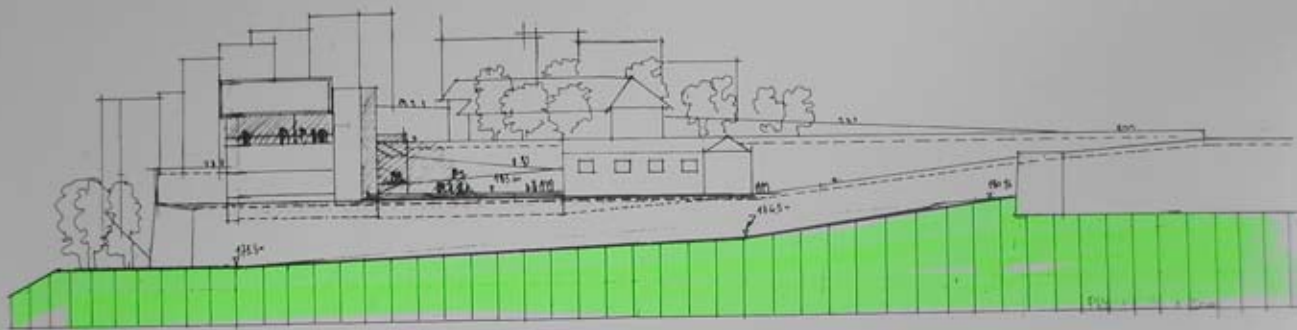








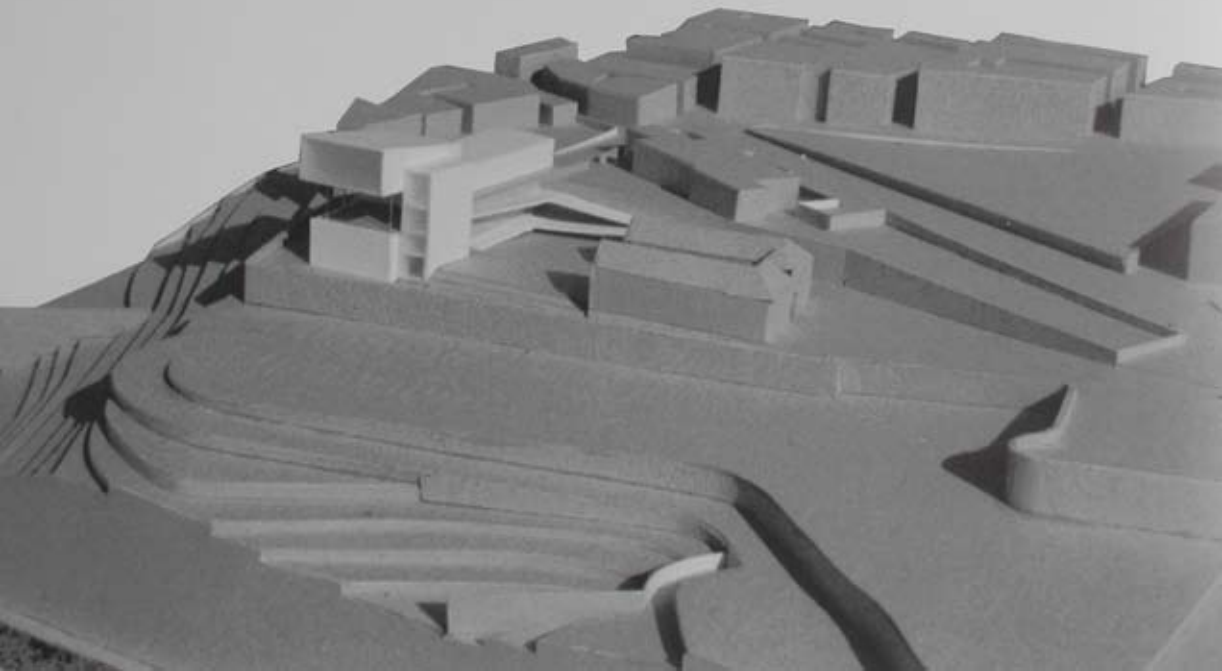


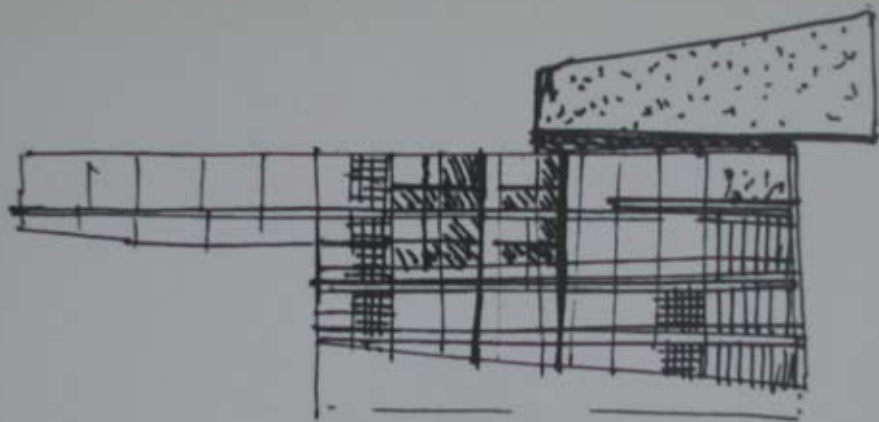




*Plastico:  
veduta dell'edificio  
a volo d'uccello.*

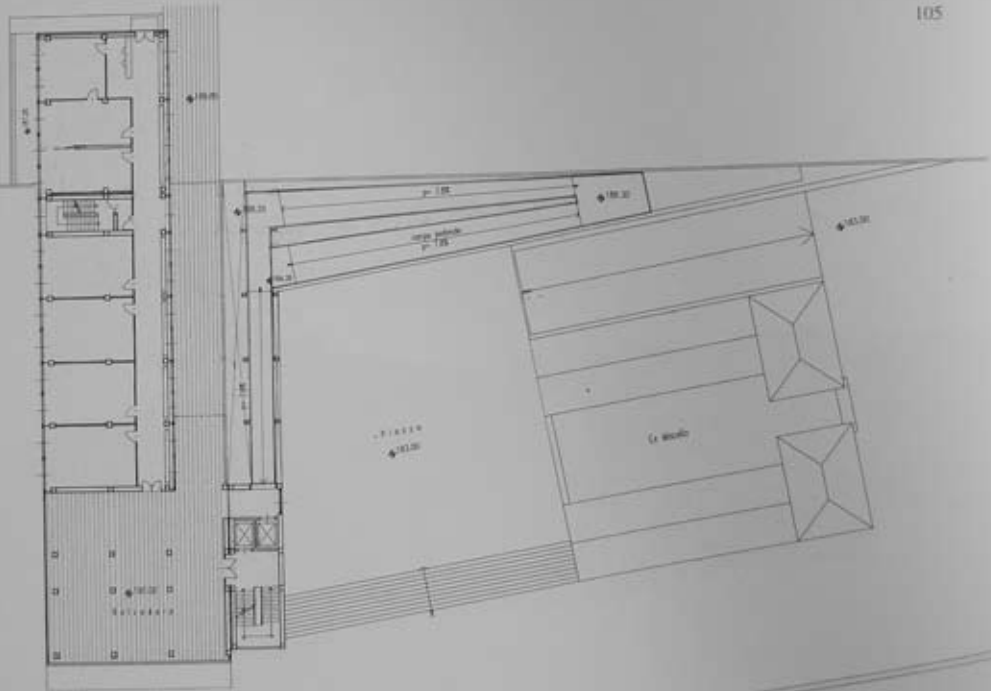
*88, 89. Studi di inserimento  
nel contesto.*

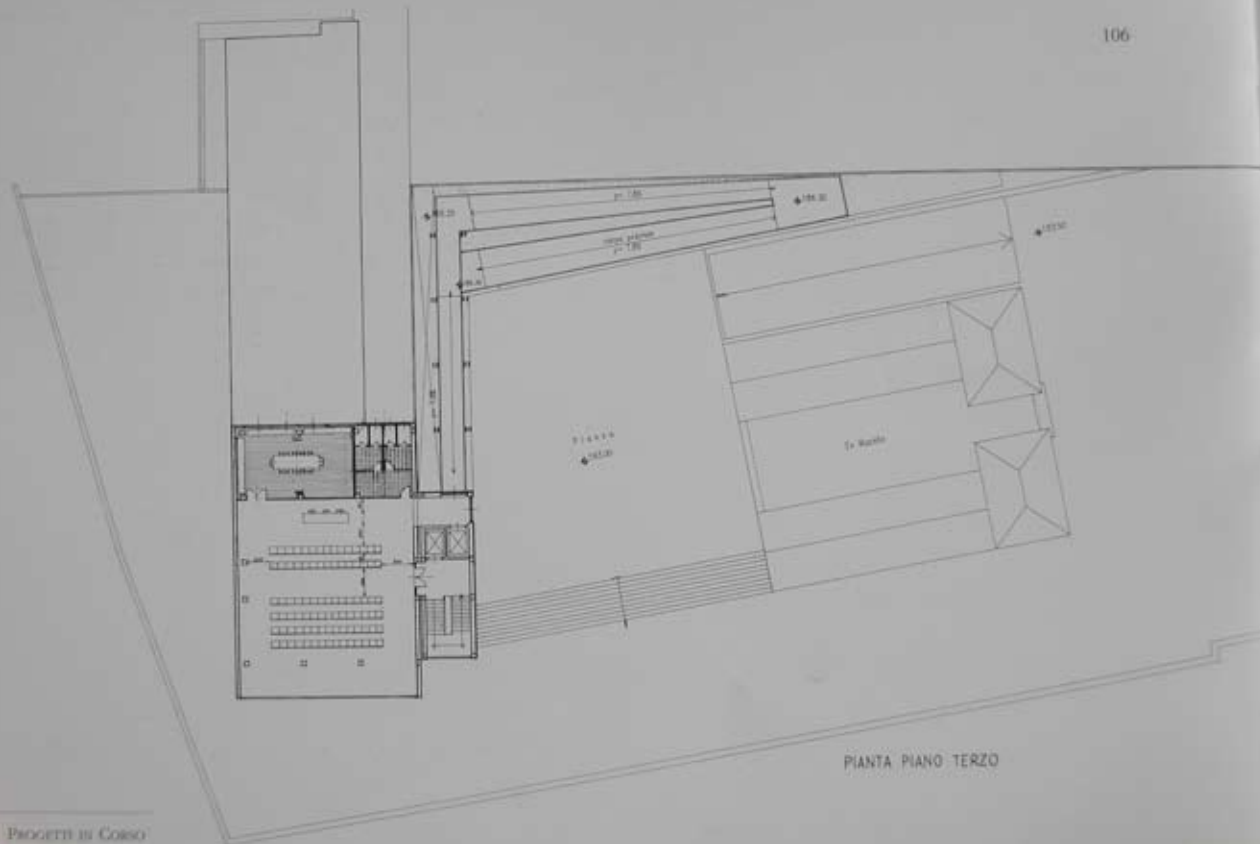




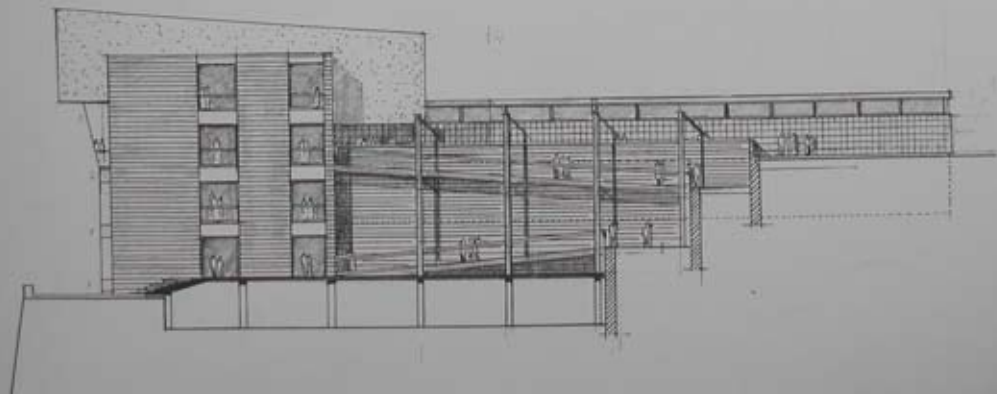
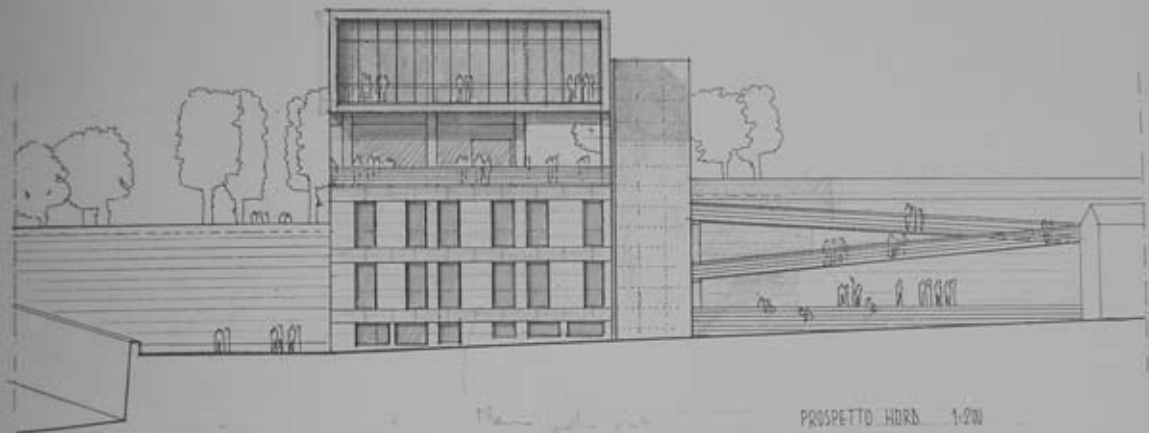


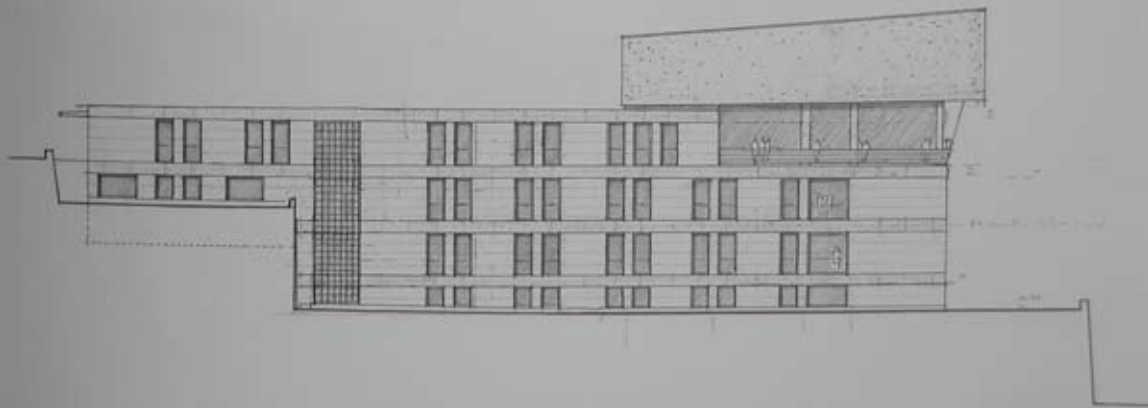
PIANTA PIANO TERRA





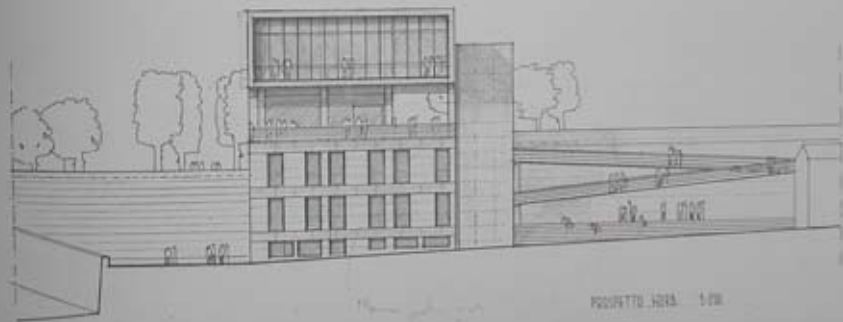








99



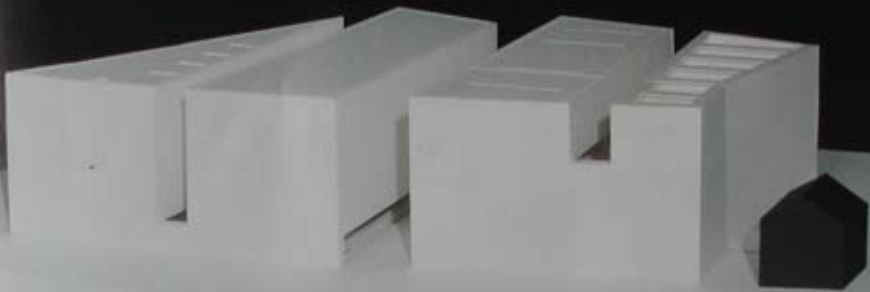
100

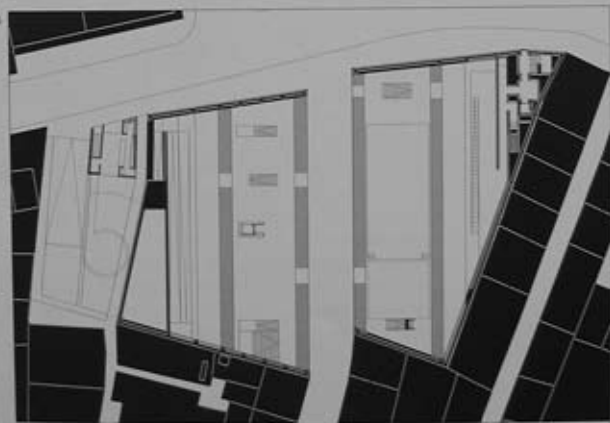
FIGURTE 102B. 1:50

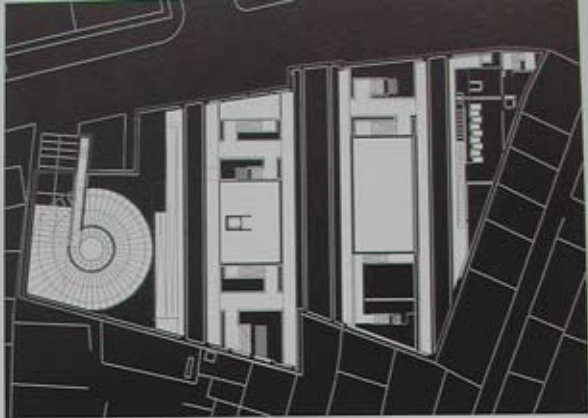








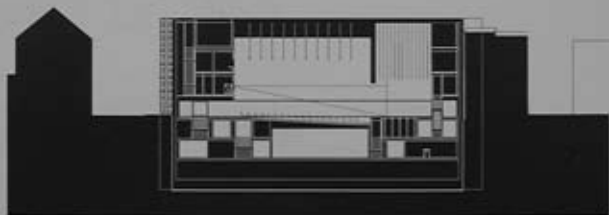




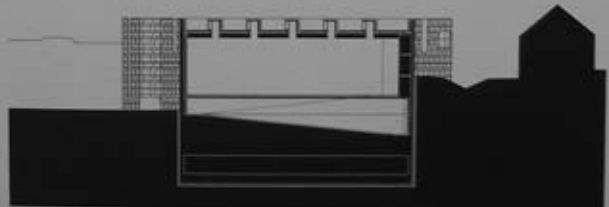
20



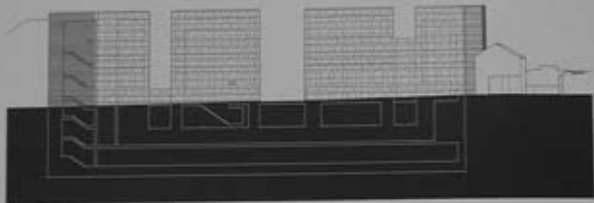
21



22



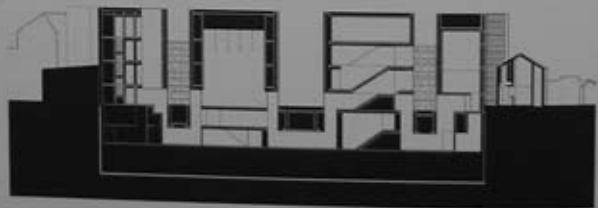
13



14



15











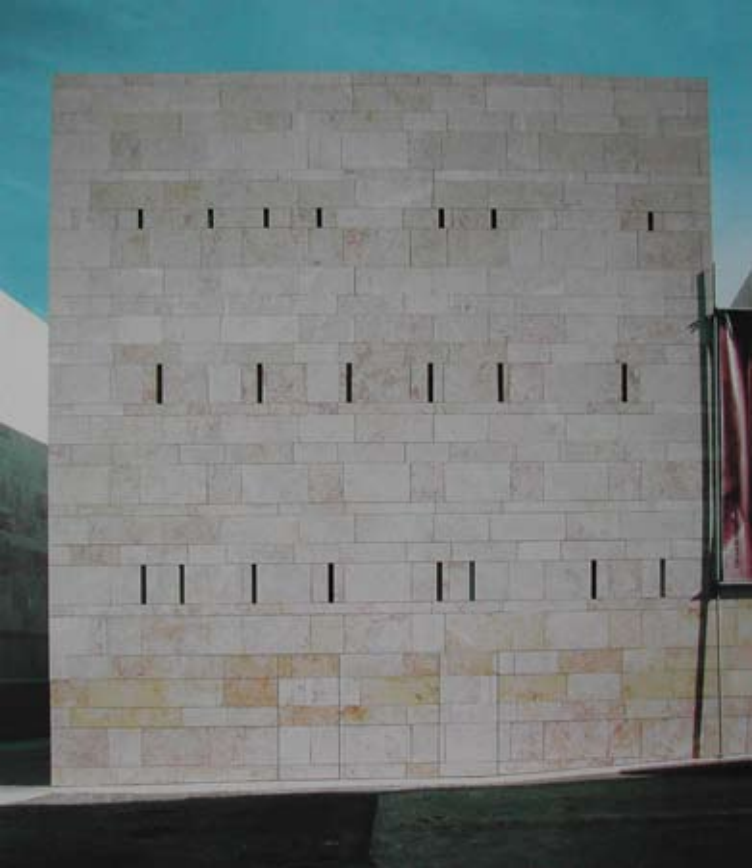












PIANTA  
di  
**TRENTO**

**Fatte della Città**

*La Porta S. Lorenzo, S. Felice, S. Terenzo,  
 S. S. Antonio, S. S. Felice, S. S. Antonio,  
 S. S. Felice, S. S. Antonio, S. S. Felice,*

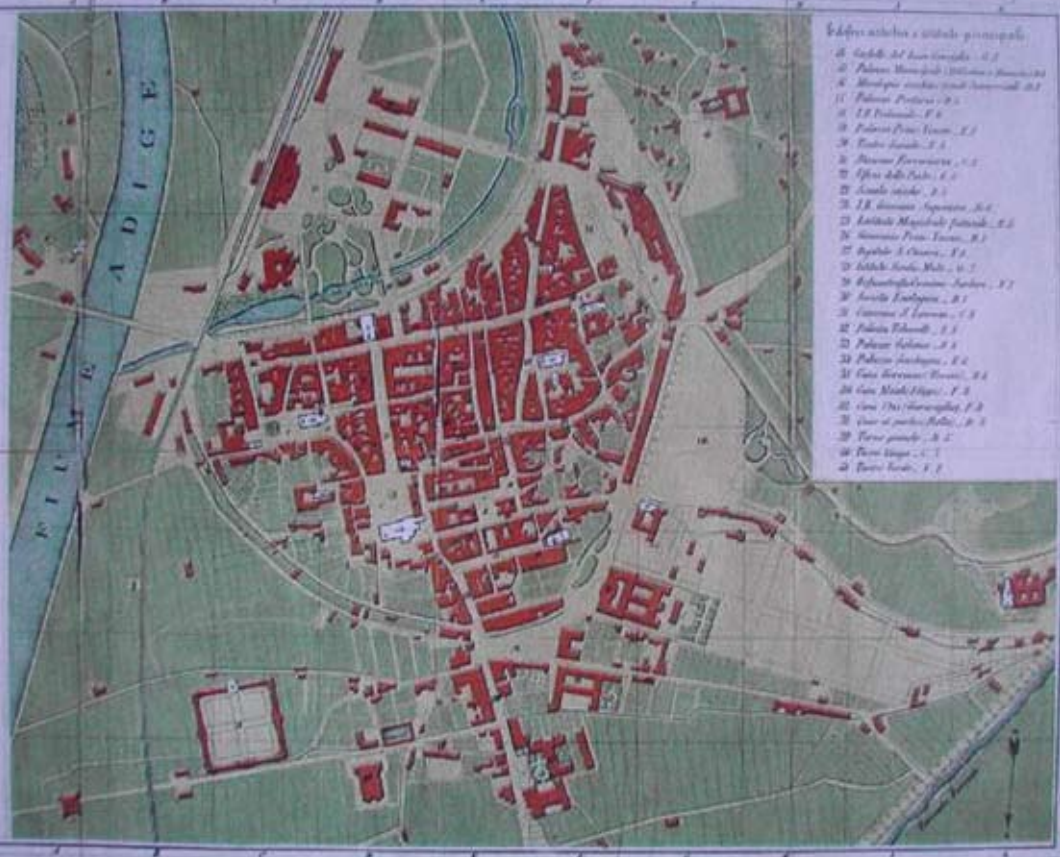
**Fabbricati Principali**

*Il Palazzo Reale, S. Maria, S. Francesco,  
 S. S. Antonio, S. S. Felice, S. S. Antonio,  
 S. S. Felice, S. S. Antonio, S. S. Felice,  
 S. S. Antonio, S. S. Felice, S. S. Antonio,  
 S. S. Felice, S. S. Antonio, S. S. Felice,*

**Subborghi o Contrade  
 della Città**

*Il Subborgo S. Felice, S. S. Antonio,  
 S. S. Felice, S. S. Antonio, S. S. Felice,  
 S. S. Antonio, S. S. Felice, S. S. Antonio,  
 S. S. Felice, S. S. Antonio, S. S. Felice,  
 S. S. Antonio, S. S. Felice, S. S. Antonio,  
 S. S. Felice, S. S. Antonio, S. S. Felice,*





- Edifici notabili e istituti principali*
1. Castello S. Venceslao - 0,5
  2. Palazzo Municipale (Municipio) - 0,5
  3. Municipio vecchio (ex-Municipale) - 0,5
  4. Palazzo Pretorio - 0,5
  5. S. Francesco - 0,5
  6. Palazzo Prati - 0,5
  7. Teatro - 0,5
  8. Palazzo Arcivescovile - 0,5
  9. Chiesa della Pace - 0,5
  10. Scuola vecchia - 0,5
  11. S. Giovanni Evangelista - 0,5
  12. Istituto Magistrale - 0,5
  13. Seminario Prati - 0,5
  14. Ospedale S. Chiara - 0,5
  15. Istituto S. Maria - 0,5
  16. Biblioteca Arcivescovile - 0,5
  17. Scuola Evangelica - 0,5
  18. Seminario S. Lorenzo - 0,5
  19. Palazzo S. Maria - 0,5
  20. Palazzo S. Maria - 0,5
  21. Palazzo S. Maria - 0,5
  22. Casa S. Maria - 0,5
  23. Casa S. Maria - 0,5
  24. Casa S. Maria - 0,5
  25. Casa S. Maria - 0,5
  26. Casa S. Maria - 0,5
  27. Casa S. Maria - 0,5
  28. Casa S. Maria - 0,5
  29. Casa S. Maria - 0,5
  30. Casa S. Maria - 0,5
  31. Casa S. Maria - 0,5
  32. Casa S. Maria - 0,5
  33. Casa S. Maria - 0,5
  34. Casa S. Maria - 0,5
  35. Casa S. Maria - 0,5
  36. Casa S. Maria - 0,5
  37. Casa S. Maria - 0,5
  38. Casa S. Maria - 0,5
  39. Casa S. Maria - 0,5
  40. Casa S. Maria - 0,5

La Riv. Zippel 1881 Trento

Pianta di Trento, 1881 (da Francesco Ambrosi, Guida Illustrata. Trento e il suo circondario, Zippel, Trento 1881).

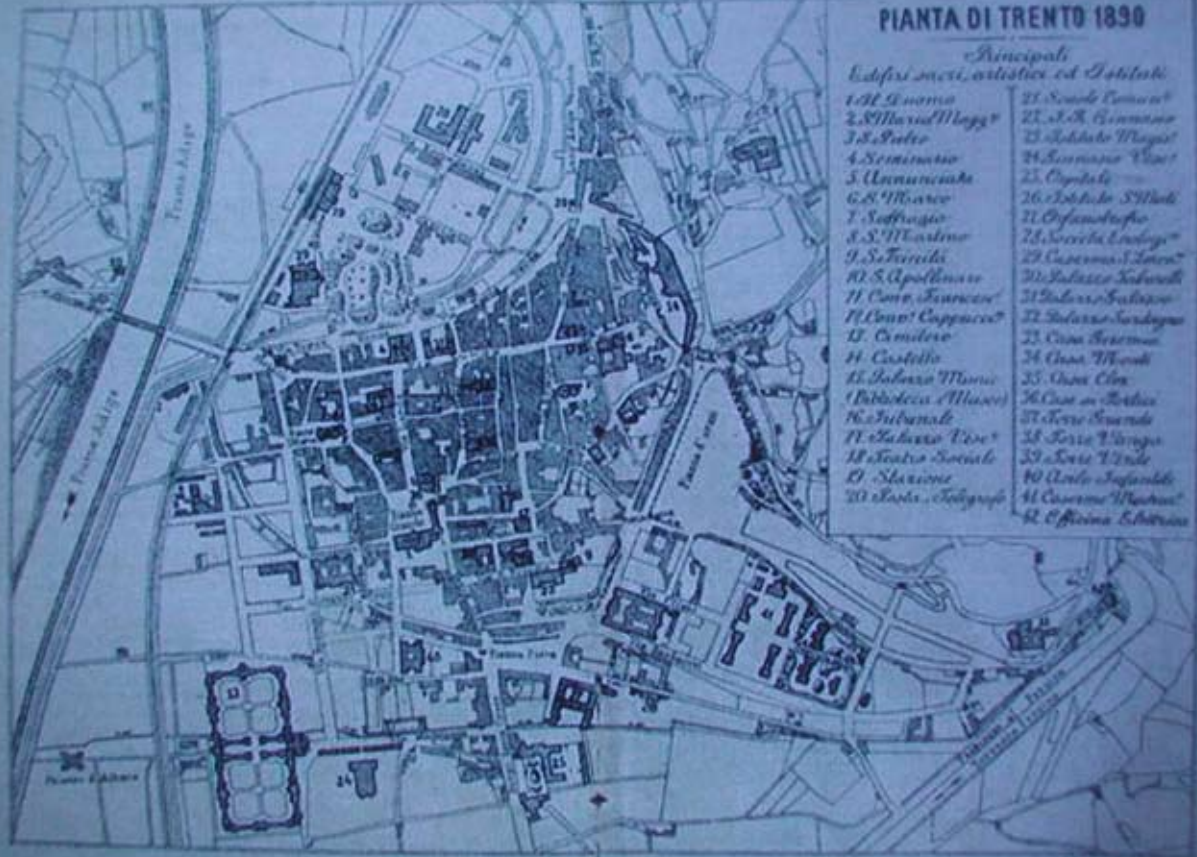


# PIANTA DI TRENTO 1890

## Principali

### Edifici sacri, artistici ed Istituti

- |                      |                        |
|----------------------|------------------------|
| 1. St. S. Maria      | 21. Scuola Tecnica     |
| 2. S. Maria Maggiore | 22. S. S. Bernardino   |
| 3. S. Pietro         | 23. Istituto Magist.   |
| 4. Seminario         | 24. Seminario Vesc.    |
| 5. Annunziata        | 25. Ospedale           |
| 6. S. Marco          | 26. Istituto S. Maria  |
| 7. S. Francesco      | 27. Ospedale Civile    |
| 8. S. Martino        | 28. Società Cantieri   |
| 9. S. Teresina       | 29. Caserma S. Antonio |
| 10. S. Apollinare    | 30. Palazzo S. Andrea  |
| 11. Comp. S. Antonio | 31. Palazzo S. Andrea  |
| 12. Comp. Cappuccini | 32. Palazzo S. Andrea  |
| 13. Camillo          | 33. Casa S. Antonio    |
| 14. Castello         | 34. Casa S. Maria      |
| 15. Palazzo Museo    | 35. Casa S. Maria      |
| (Biblioteca Museo)   | 36. Casa S. Maria      |
| 16. Tribunale        | 37. Torre S. Andrea    |
| 17. Palazzo Vesc.    | 38. Torre S. Andrea    |
| 18. Teatro Sociale   | 39. Torre S. Andrea    |
| 19. Stazione         | 40. Torre S. Andrea    |
| 20. Casa S. Andrea   | 41. Caserma S. Antonio |
|                      | 42. Caserma S. Antonio |









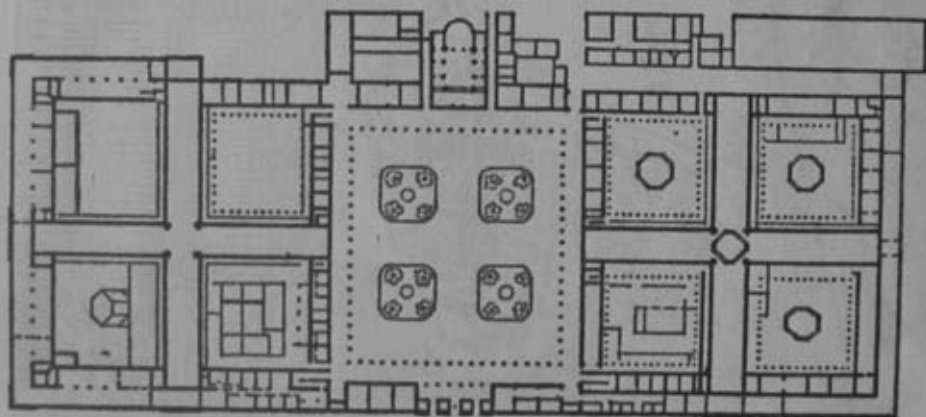


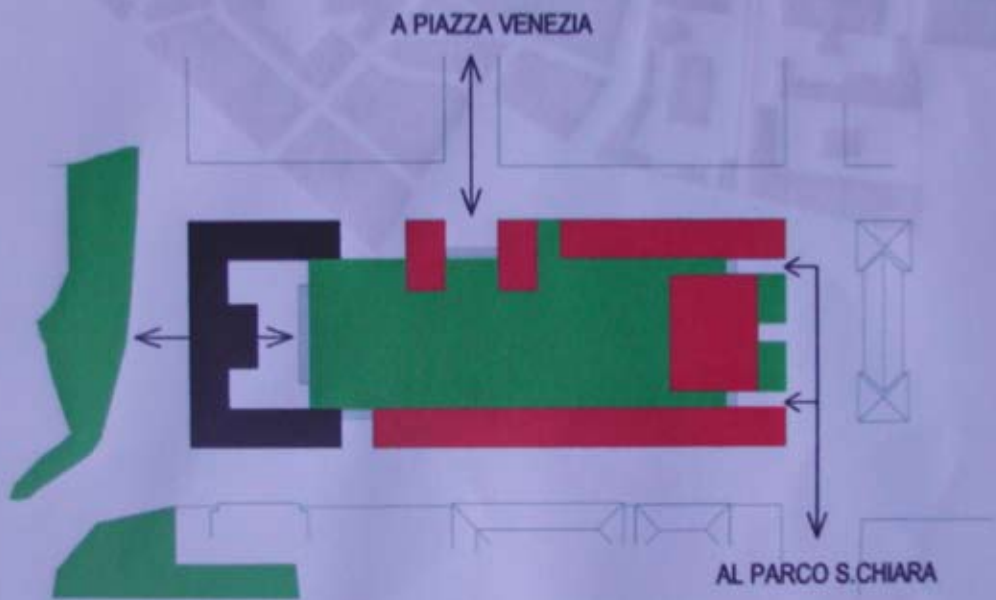




i "recinti" e il sistema del verde

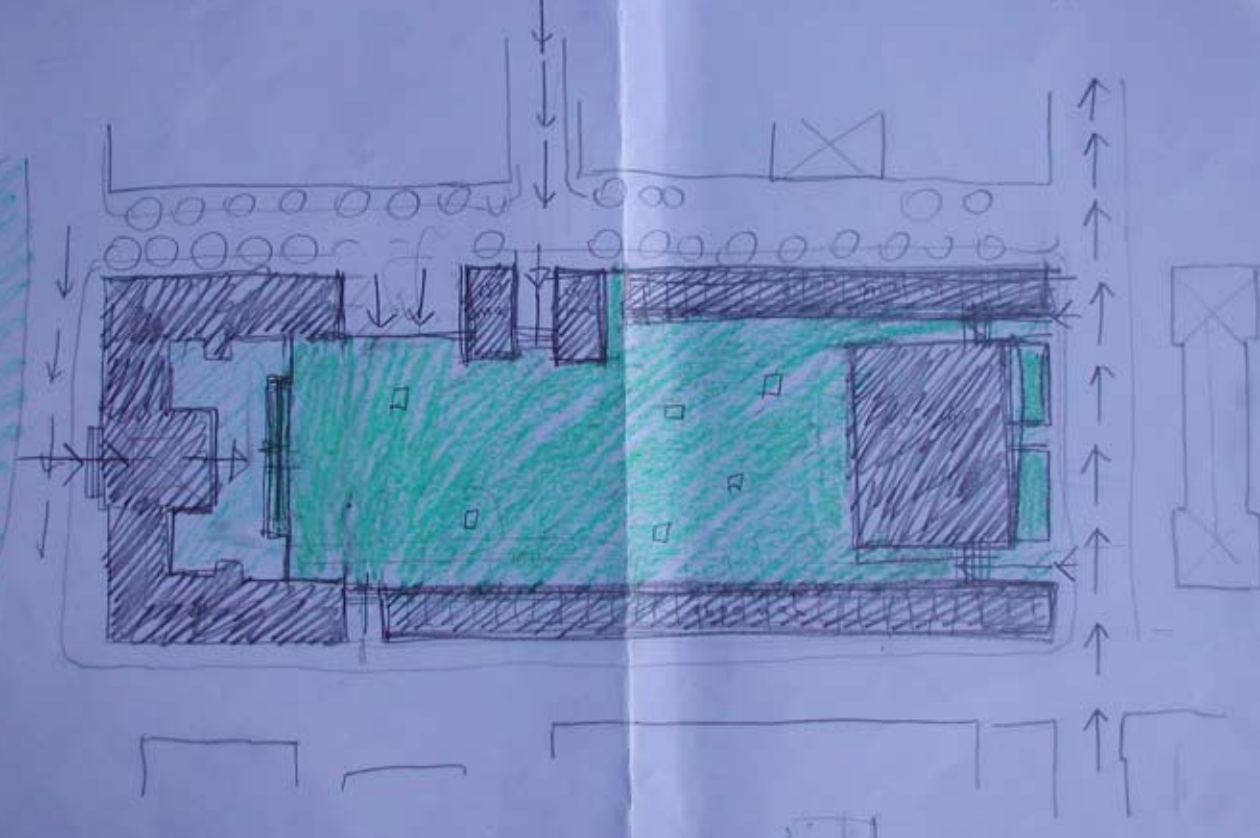






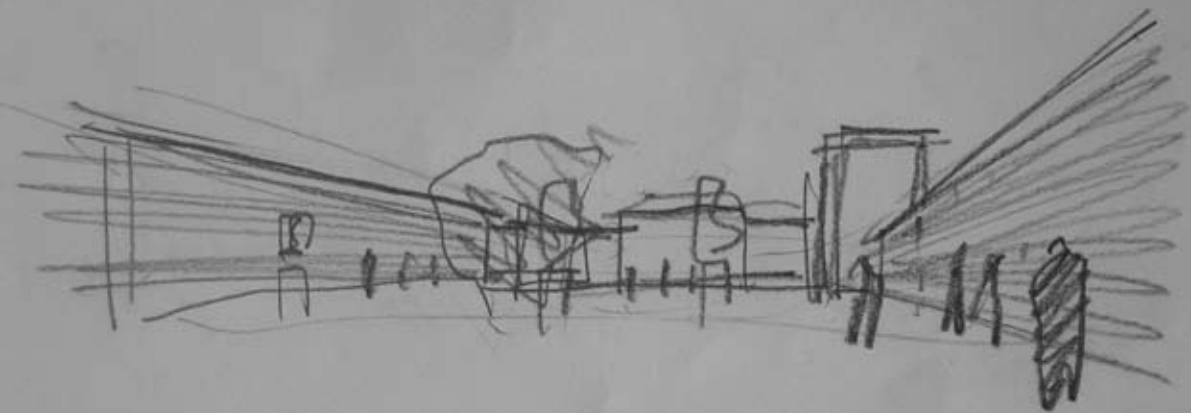
190.00

5% 13.6



80











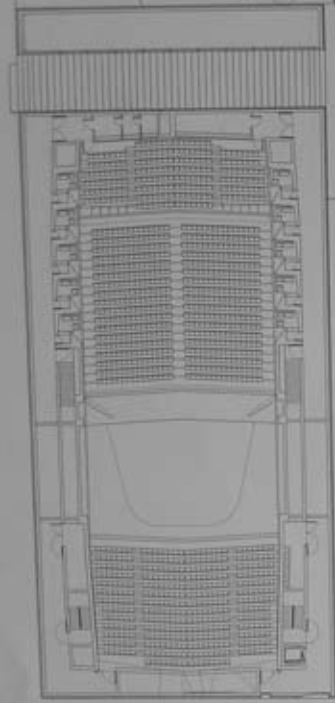
0 50 m





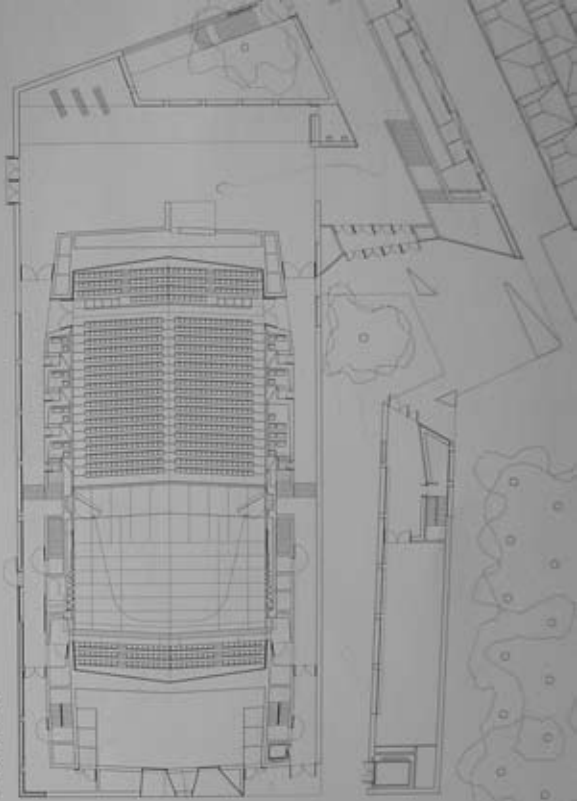


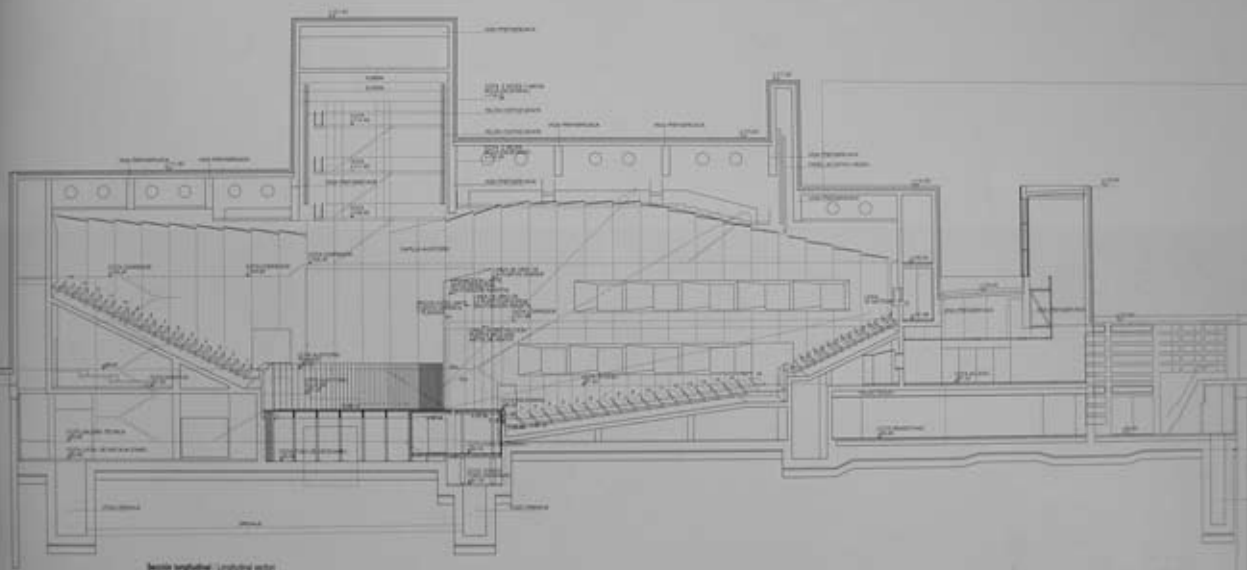




Plan 100 - Grand floor plan

Plan 101 - Grand floor plan





Sección longitudinal - Longitudinal section









