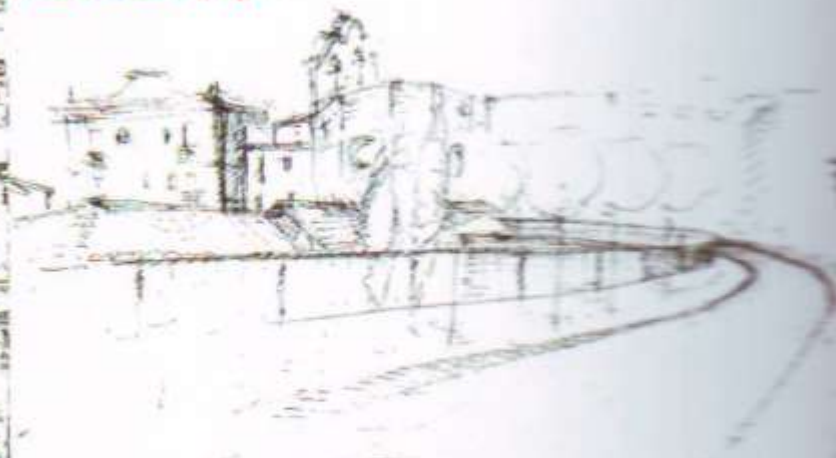
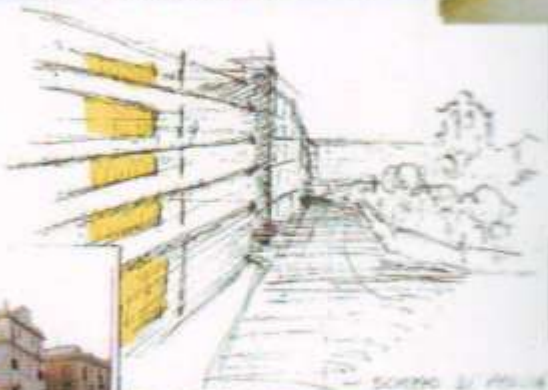


EL RAVAL - BARCELONA



ANALISI FOTOGRAFICA DEL QUARTZO



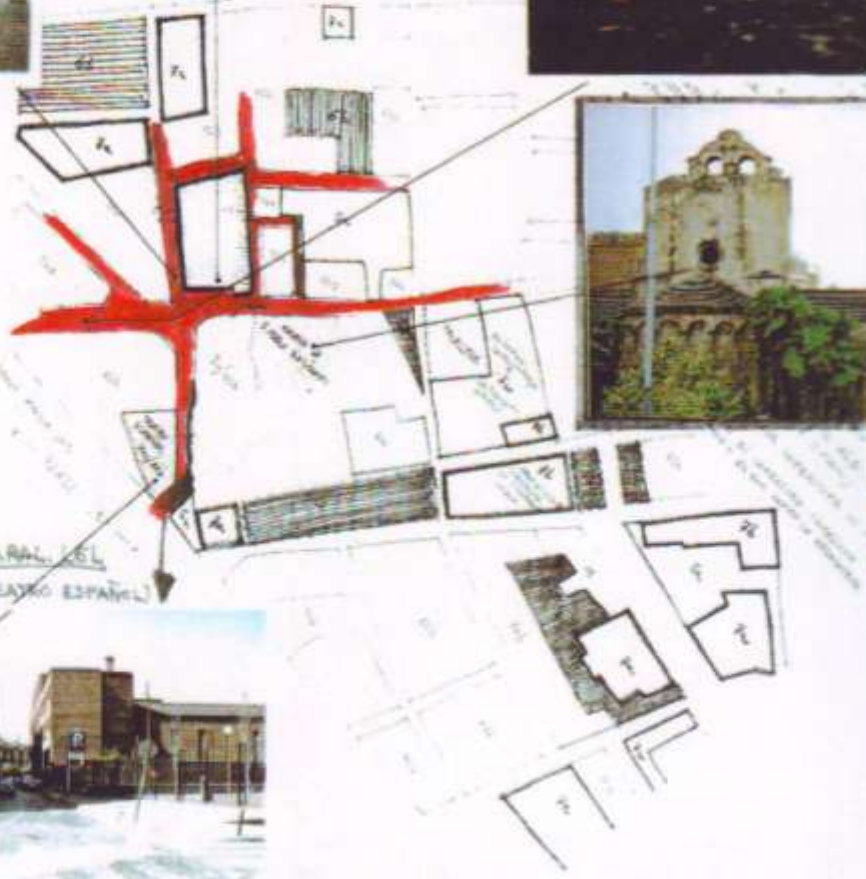
IL TITOLO :



STUDIO DEL LUOGO



1° PERICOLO :



INGRESSO DALLA PARALLELA
ALLA SINISTRA - EL TEATRO ESPAÑOL



BELLO STUDENTE - BARCELONA

***FRUTTORI - STUDENTI LOCALI ED ESTERNI:**

- *FUNZIONI:**
- ALLOGGI;
 - ELEMENTI DI DISTRIBUZIONE URSI E GRUCI;
 - SPAZI COMUNI + SERVIZI;
 - AMMINISTRAZIONE;
 - PARCHEGGI;

- *ALLOGGI:**
- 1) ALLOGGI INSERIMENTI PER 4 STUDENTI
 - 2) ALLOGGI SEMPLICI PER 4 STUDENTI
 - 3) CELLULE ANTIQUE ELEMENTARI (PER 2 STUDENTI)

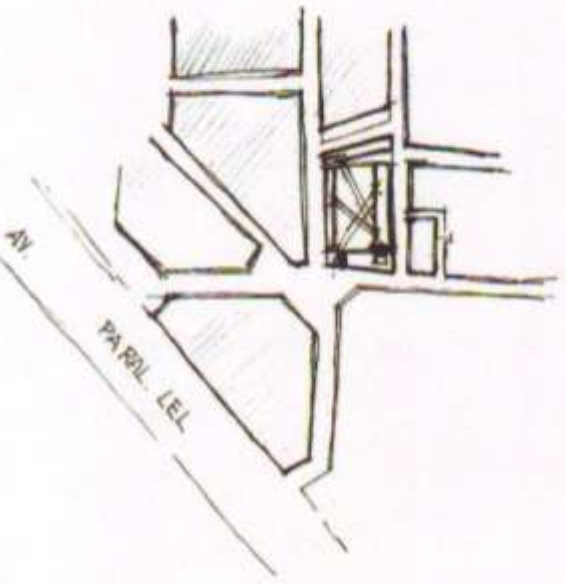
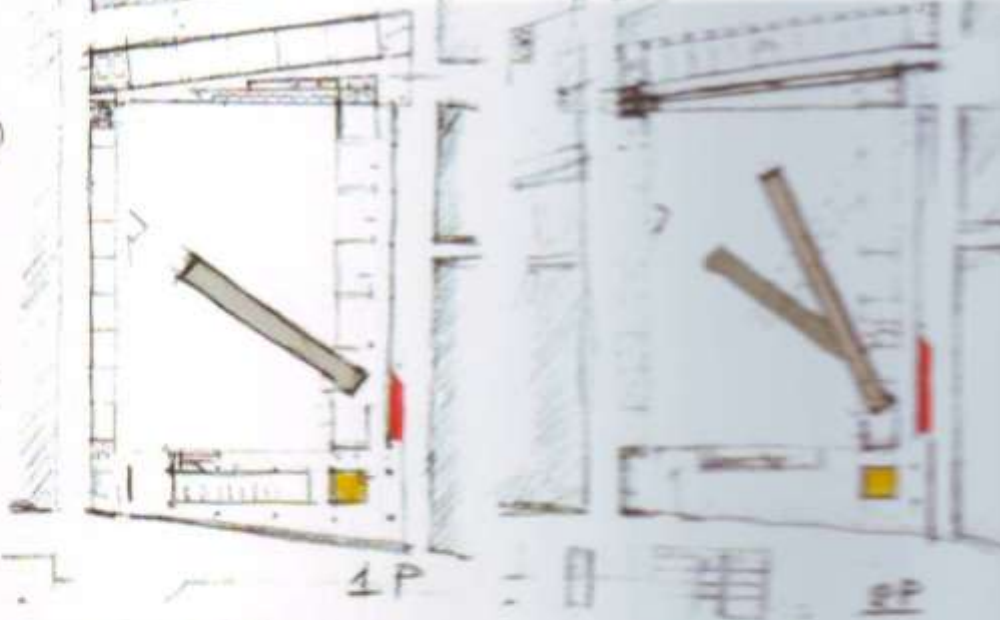
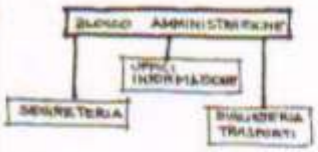
- ELEMENTI DI DISTRIBUZIONE:**
- BALLatoio (con ANGE DI SCOSTA);
 - SCALE (INTERNE ED ESTERNE);
 - PIANI INCLINATI;
 - ASCENSORI;

- *SPAZI COMUNI:**
- AREE STUDIO (SALTE EDIFICI A I VARI PIANI);
 - SPAZIO RICICLAGGIO
 - TELEVISIONE
 - PUNTO TELEFONO
 - PROIEZIONE
 - CAPPISTINA
 - BARRA
 - LIBRERIA -> ENOTE + LIBRI + QUOTIDIANI
 - > SERVIZIO INTERNET
 - > SPAZIO FOTOCOPIE
 - ALIMENTAZIONE -> MANGIANDO DISTRIBUZIONE
 - BAGNI; LAVANDERIA;

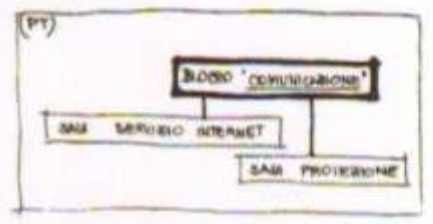
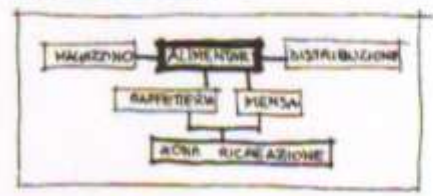
- MAGAZZINO
- UFFICIO INFORMAZIONI
- ENCLAVATA - TRASPORTI

- *PARCHeggi SCARABATTI:**
- MARCHIE
 - MOTORCICLI
 - PULZINI (PER IL TRAMONTA)
 - SENI ALIMENTARI

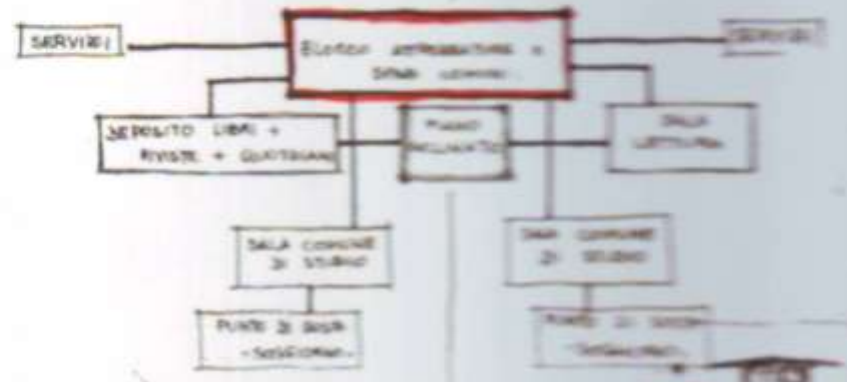
PROGRAMMA FUNZIONALE:



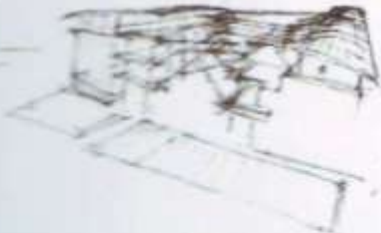
Blocco PT (SPAZI COMUNI)



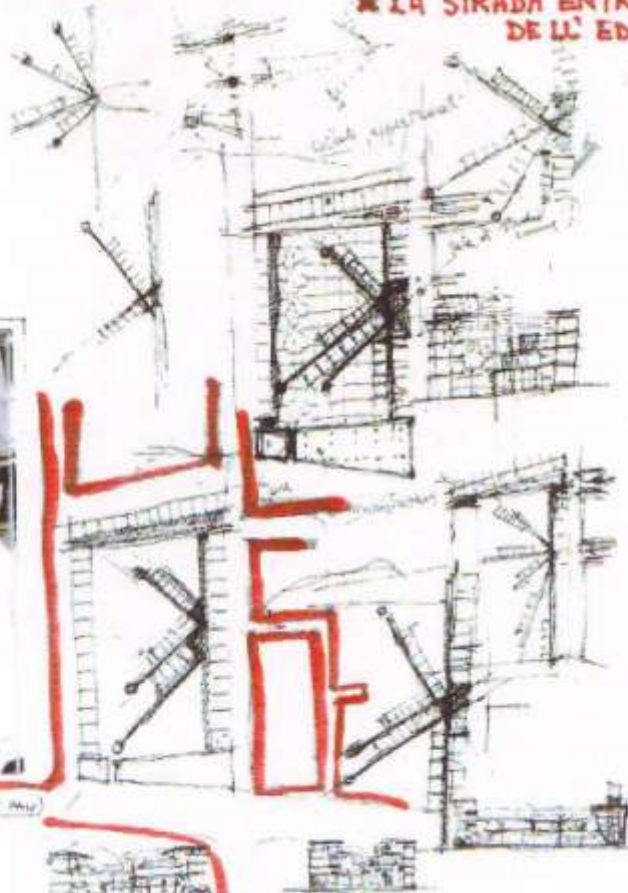
Blocco P-1



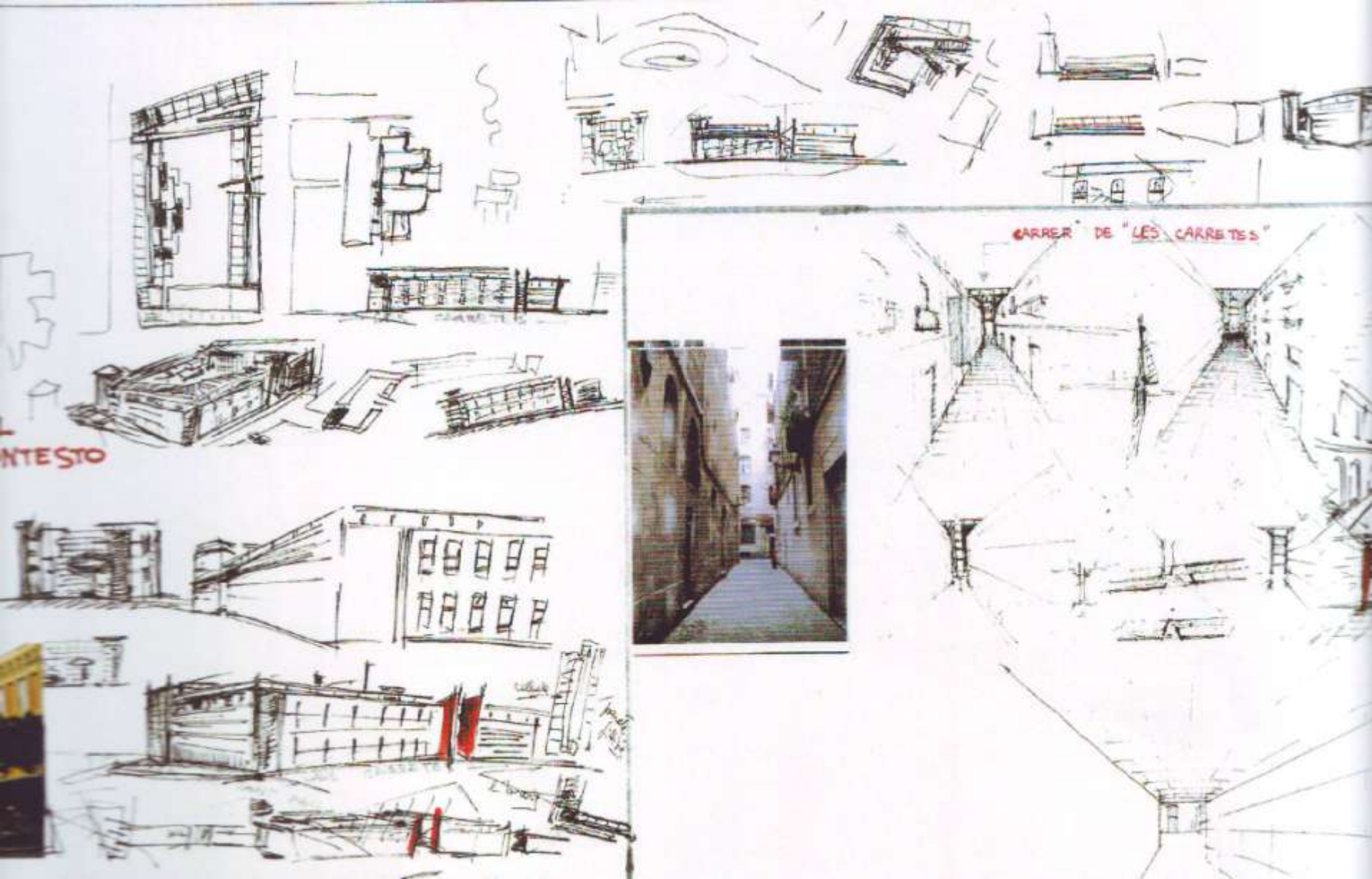
1° VINCOLO: ALLINEAMENTO AL VIALE



LA STRADA ENTRA ALL'INTERNO
DE LL' EDIFICIO

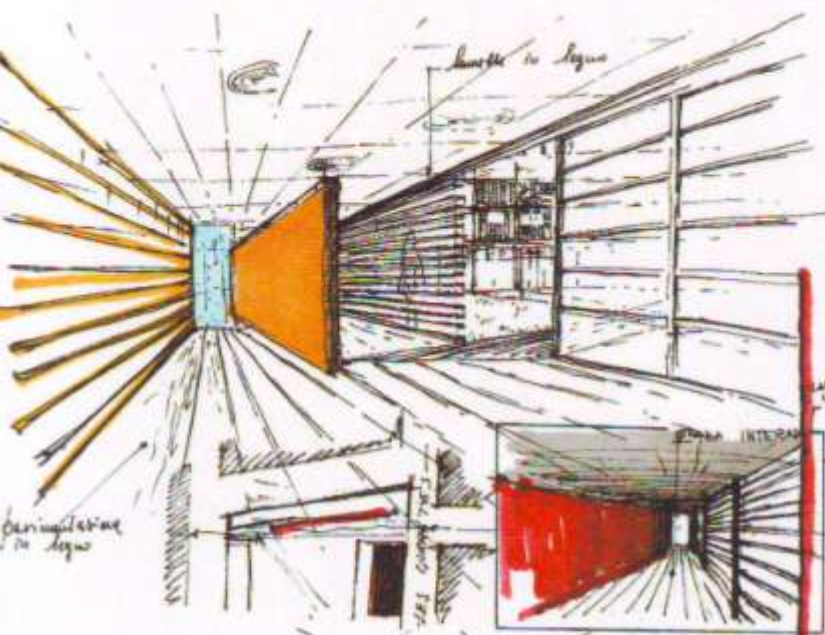


LES GARRETES
(INTERNO DELLA PARRA MAY MAY)



TESTO

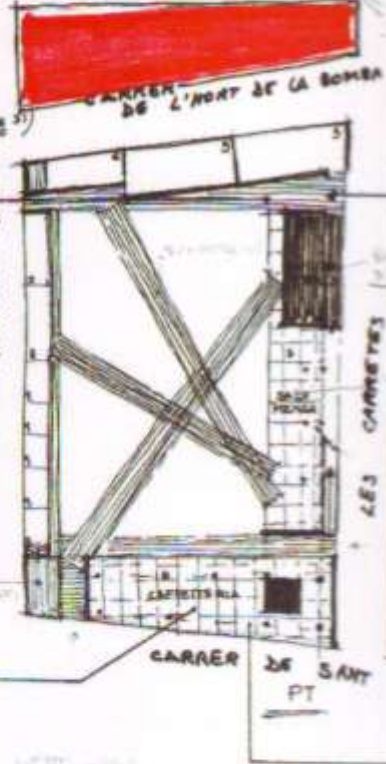
CARRER DE "LES CARRETES"



LEGENDA :

- 1 - CAFFETERIA
- 2 - MENSA 220 m²
- 3 - CUCINA 60 m² + DEPOSITO
- 4 - SALA COLLETTIVA 180 m²
- 5 - SALA PROIEZIONE 230 m²
- 6 - 30 m²
- 7 - LAVANDERIA 50 m²
- 8 - TELEFONI - FOTOCOPIE 30 m²
- 9 - UFFICI - AMMINISTRAZIONE 220 m²

- ELEMENTI DI DISTRIBUZIONE VENT. E SERV. -



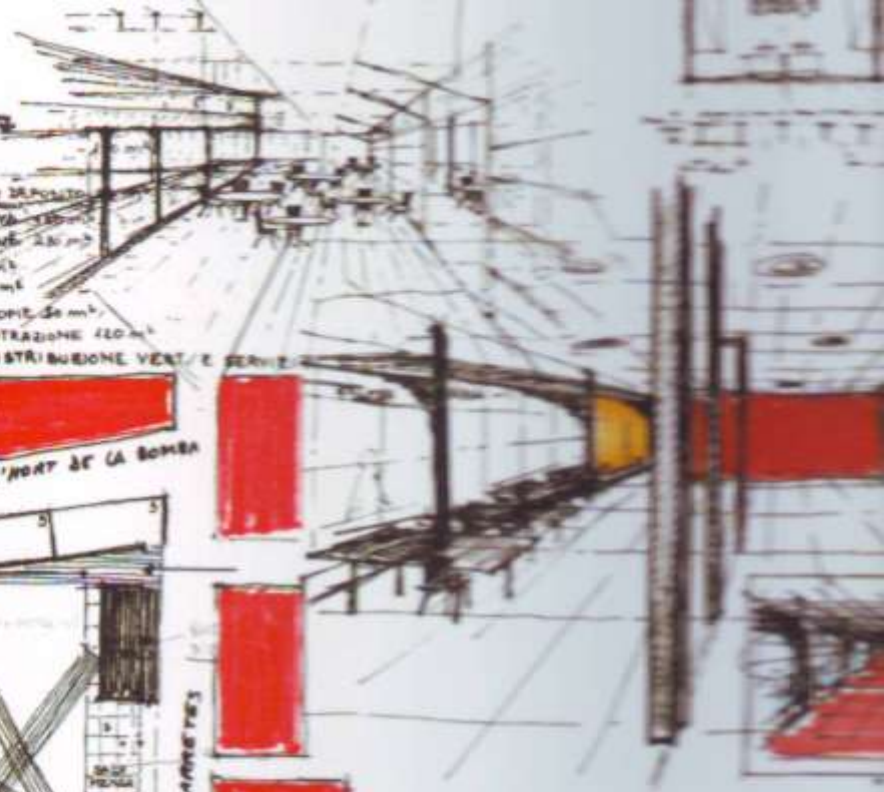
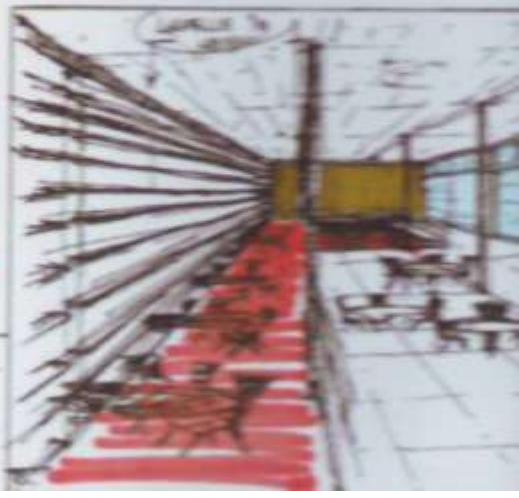
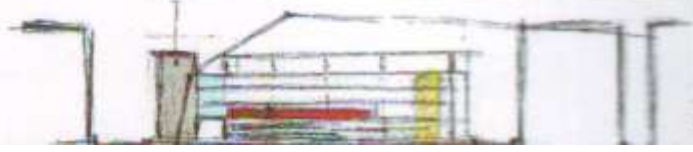
- CARRER DE LA REINA AMALIA -

LES CARRIERS

perimetrale in legno



- CAFFETERIA -





Ajuntament
de
Barcelona

28 APRIL 1985

AJUNTAMENT DE BARCELONA

PLA ESPECIAL DE REFORMA URBANA

"EL BARRI"

"EQUIPAMENTS COMUNITARIS"

(7)

TIP. D' ATRIBUCIÓ URBANITÀRIA

ART. 1. AMBIT DEL PLÀN.

SECTOR COMPRES PER LES
PARQUES EL CARTER PELAR
LA PLACA UNIVERSITAT SES
RINOS DE SANT AMON I
SANT PEU CANGUERA DEL
NAPOLÈU I EL PASSEIG COCH

ART. 2. ZONIFICACIÓ.

L'AMBIT DEL SECTOR D'
PLANIFICACIÓ SUPLEIX UNA
ZONA DE CASES ANTIGUES DE
CONSERVACIÓ I ZONE
SUBJETE A PROTECCIÓ DE
ORIGINE VOLUNTARIA DE
ORIGINE URB.

1. TIPO PER ATRIBUCIÓ

COMUNITARI I REPRESENTATI
AFIRMATI I SÓN NOMBRES D'
IDENTIFICACIÓ TA, PD, TC.

2. REPRESENTA D' EQUIPAMENTS

EXISTENTS O A EXECUCIÓ.

3. TIPO RESERVAT A NOUVE OREX

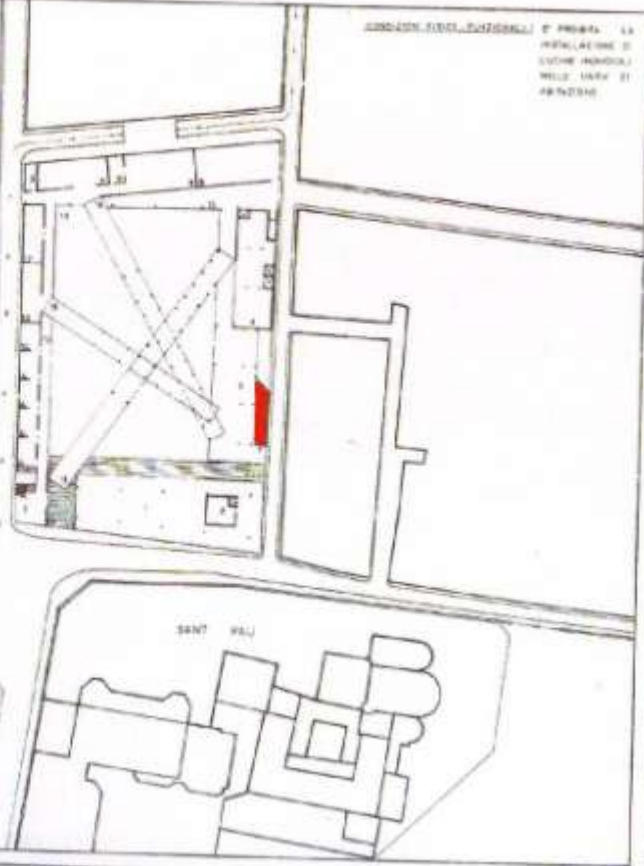
ZONE D' AMBIT LOCAL.

4. TIPO RESERVAT A NOUVE OREX

ZONE D' INTERESSE METROPOLITAIN.

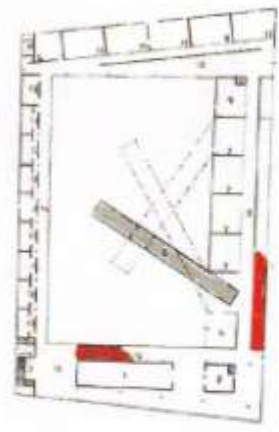
PIANTA PIANO TERRA

- 1. IMPIANTO
- 2. SALA + COLLEGAMENTO VERI (CORRIDORE)
- 3. COLLEGAMENTO VERI (SALA)
- 4. UFFICIO
- 5. SALA MESE
- 6. PIANO DELINTE "MAGAZZINO"
- 7. SALA I. MESE
- 8. SALA PROIEZIONE
- 9. SALA
- 10. "SALA INTERNA"
- 11. SALA SERVIZI INTERNI
- 12. LAVANDERIA + SALA INSTALLAZIONE
- 13. SALA TELEFON
- 14. SALA
- 15. PIANO COBERTO
- 16. PAVIMENTAZIONE A UOMO
- 17. UOMO DALLA PIAZZA DI SAN PIETRO
- 18. PAVIMENTAZIONE
- 19. PIAZZA



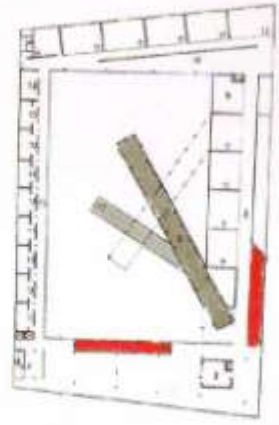
CONDIZIONI ECONOMICHE E PROGRAM. LA
INSTALLAZIONE DI
CUTINE INDIVIDUALI
NELLE UFFICI DI
MESE

PIANTA PIANO 1°



- 1. COLLEGAMENTO VERI (CORRIDORE)
- 2. SALA COPRILETTA + SALA + COLLEGAMENTO VERI (CORRIDORE)
- 3. COLLEGAMENTO VERI (SALA)
- 4. SALA MESE
- 5. PIANO DELINTE "MAGAZZINO"
- 6. SALA I. MESE
- 7. SALA PROIEZIONE
- 8. SALA
- 9. "SALA INTERNA"
- 10. SALA SERVIZI INTERNI
- 11. LAVANDERIA + SALA INSTALLAZIONE
- 12. SALA TELEFON
- 13. SALA
- 14. PIANO COBERTO
- 15. PAVIMENTAZIONE A UOMO
- 16. UOMO DALLA PIAZZA DI SAN PIETRO
- 17. PAVIMENTAZIONE
- 18. PIAZZA

PIANTA PIANO 2°

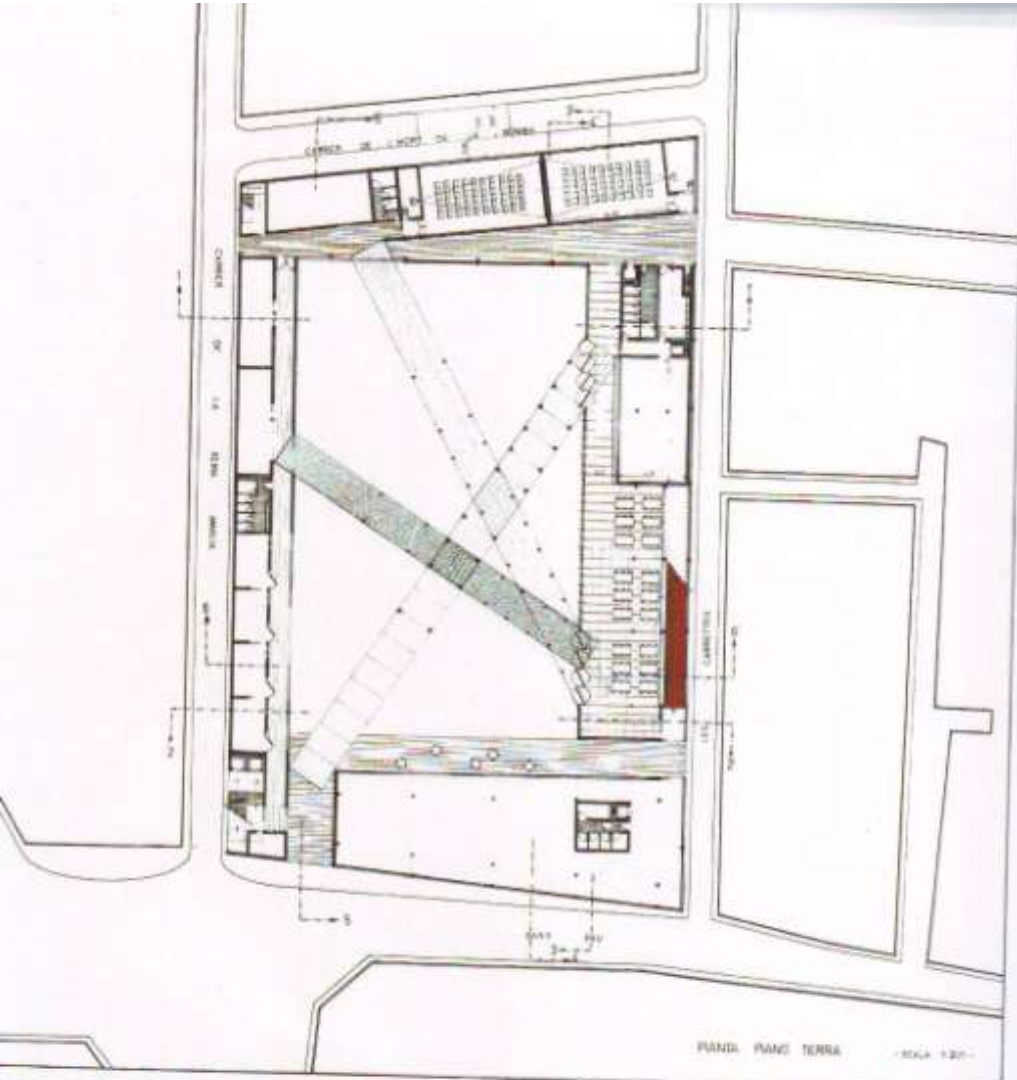


- 1. SALA LETTORIA
- 2. SALA COPRILETTA + SALA + COLLEGAMENTO VERI (CORRIDORE)
- 3. COLLEGAMENTO VERI (SALA)
- 4. SALA MESE
- 5. PIANO DELINTE "MAGAZZINO"
- 6. SALA I. MESE
- 7. SALA PROIEZIONE
- 8. SALA
- 9. "SALA INTERNA"
- 10. SALA SERVIZI INTERNI
- 11. LAVANDERIA + SALA INSTALLAZIONE
- 12. SALA TELEFON
- 13. SALA
- 14. PIANO COBERTO
- 15. PAVIMENTAZIONE A UOMO
- 16. UOMO DALLA PIAZZA DI SAN PIETRO
- 17. PAVIMENTAZIONE
- 18. PIAZZA

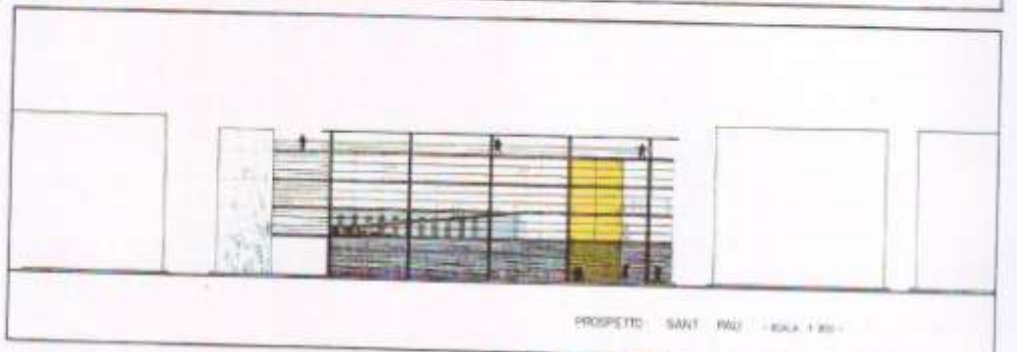
PIANTA PIANO 3°



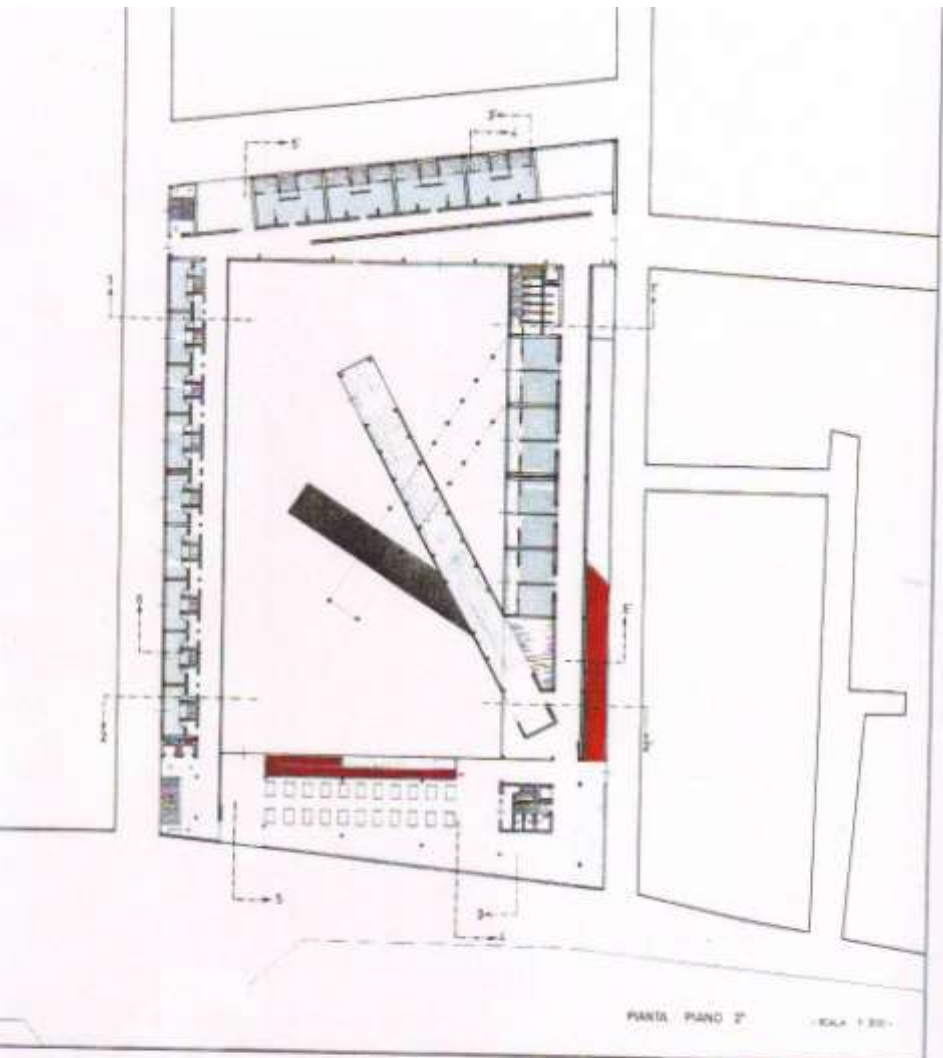
- 1. SALA LETTORIA
- 2. SALA COPRILETTA + SALA + COLLEGAMENTO VERI (CORRIDORE)
- 3. COLLEGAMENTO VERI (SALA)
- 4. SALA MESE
- 5. PIANO DELINTE "MAGAZZINO"
- 6. SALA I. MESE
- 7. SALA PROIEZIONE
- 8. SALA
- 9. "SALA INTERNA"
- 10. SALA SERVIZI INTERNI
- 11. LAVANDERIA + SALA INSTALLAZIONE
- 12. SALA TELEFON
- 13. SALA
- 14. PIANO COBERTO
- 15. PAVIMENTAZIONE A UOMO
- 16. UOMO DALLA PIAZZA DI SAN PIETRO
- 17. PAVIMENTAZIONE
- 18. PIAZZA



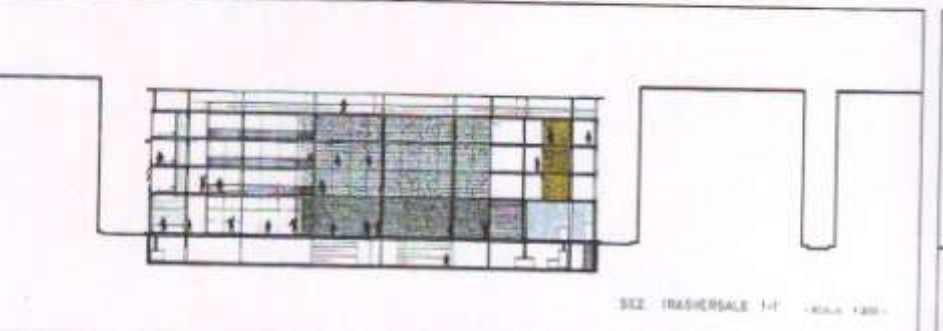
PIANO PIANO TERRA -Scala 1:20-



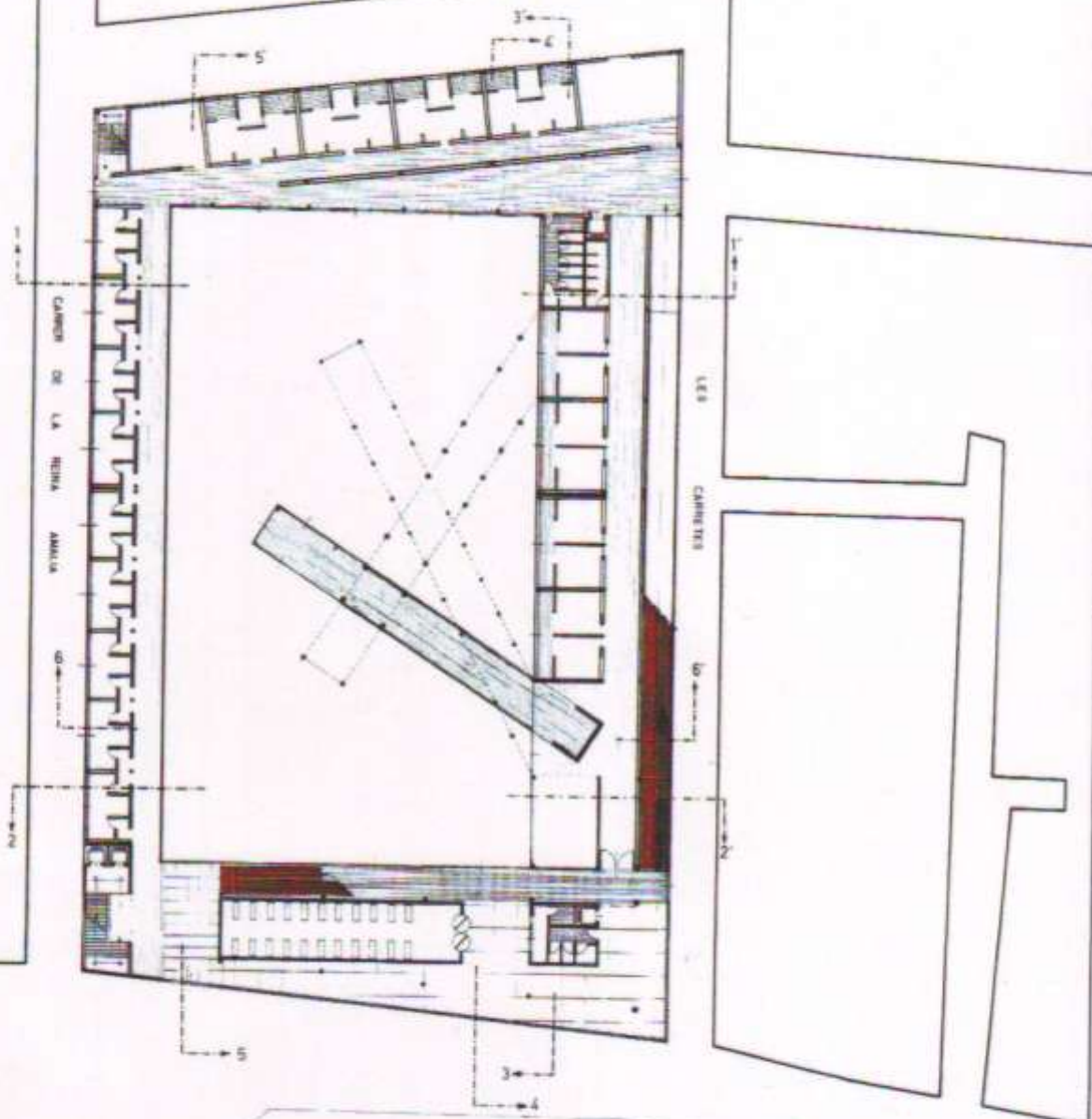
PROSPETTO SANT PAU -Scala 1:20-



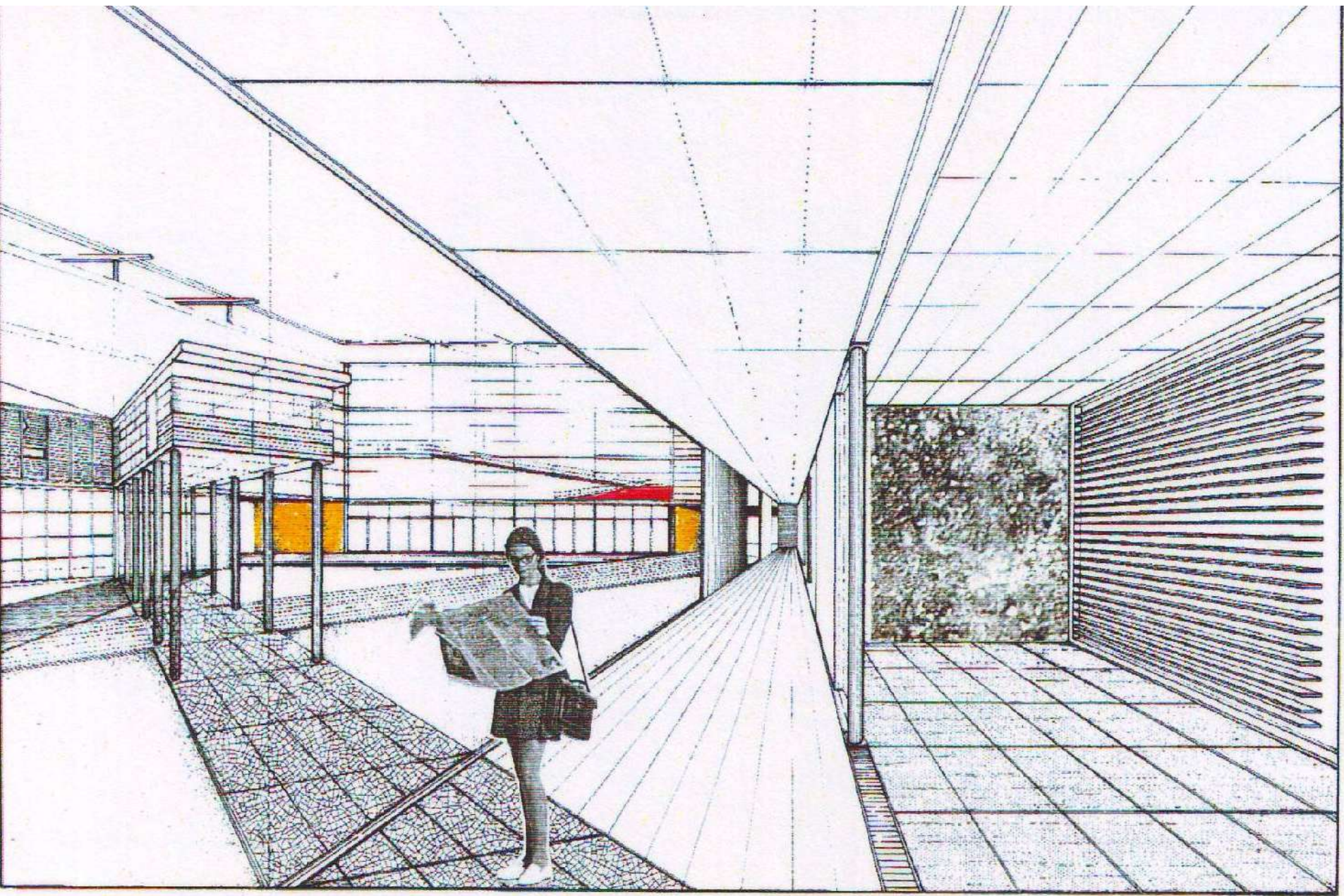
PANTA PIANO 2° - KALA 1/200



SEZ. TRASVERSALE 1-1 - KALA 1/200

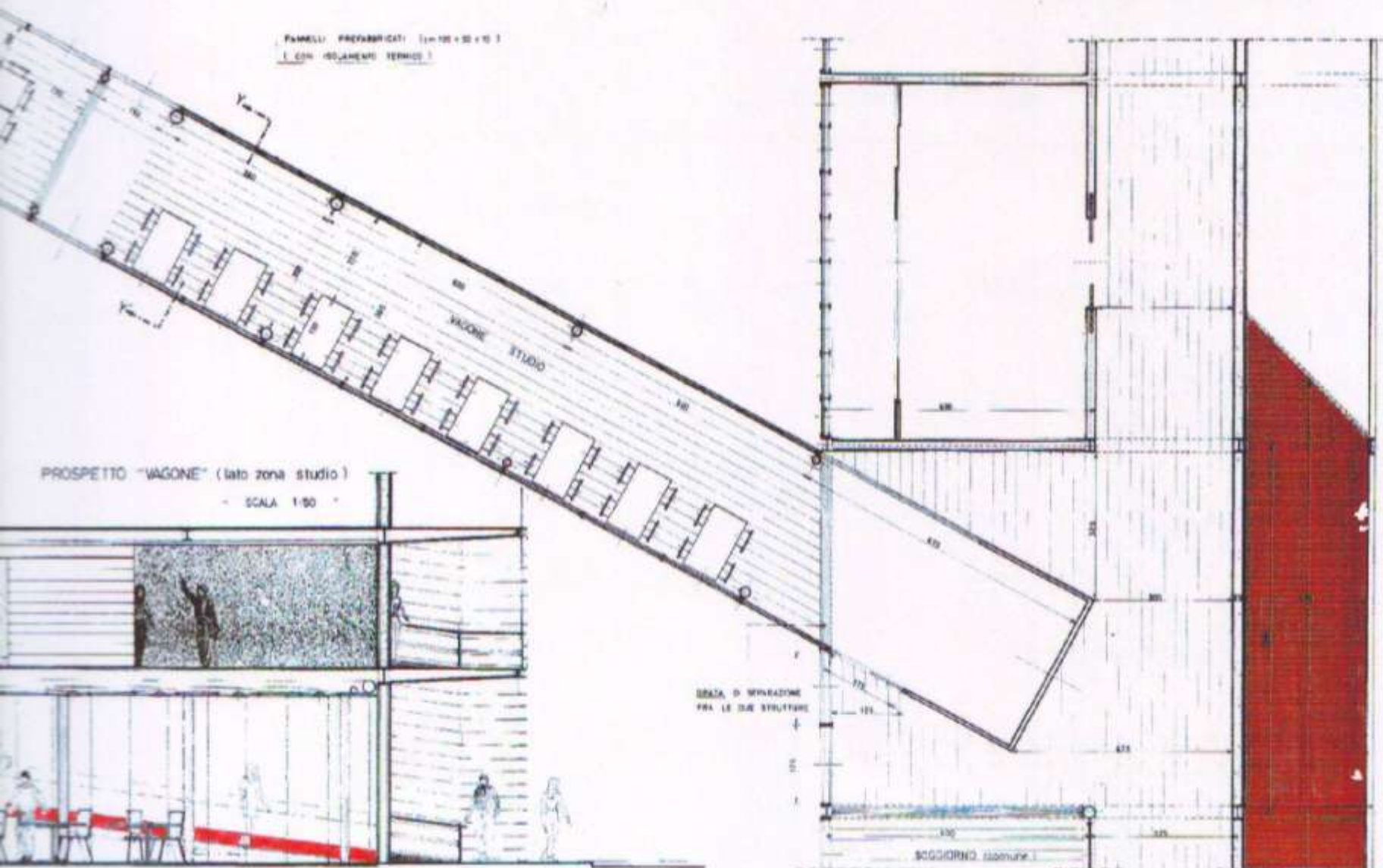


PIANTA PIANO 1° - SCALA 1:200 -

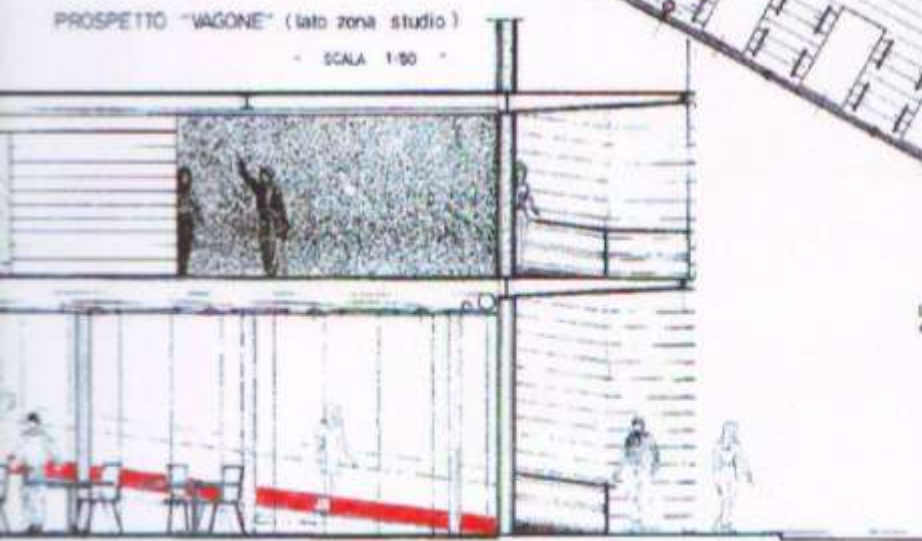


PIANTA scala 1:50
(PARTICOLARE GIUNZIONE TRA LE 2 STRUTTURE)

FAMELLI PREFABRICATI (10x100x30x10)
1 CON ISOLAMENTO TERMICO 1



PROSPETTO "VAGONE" (lato zona studio)
- SCALA 1:50 -

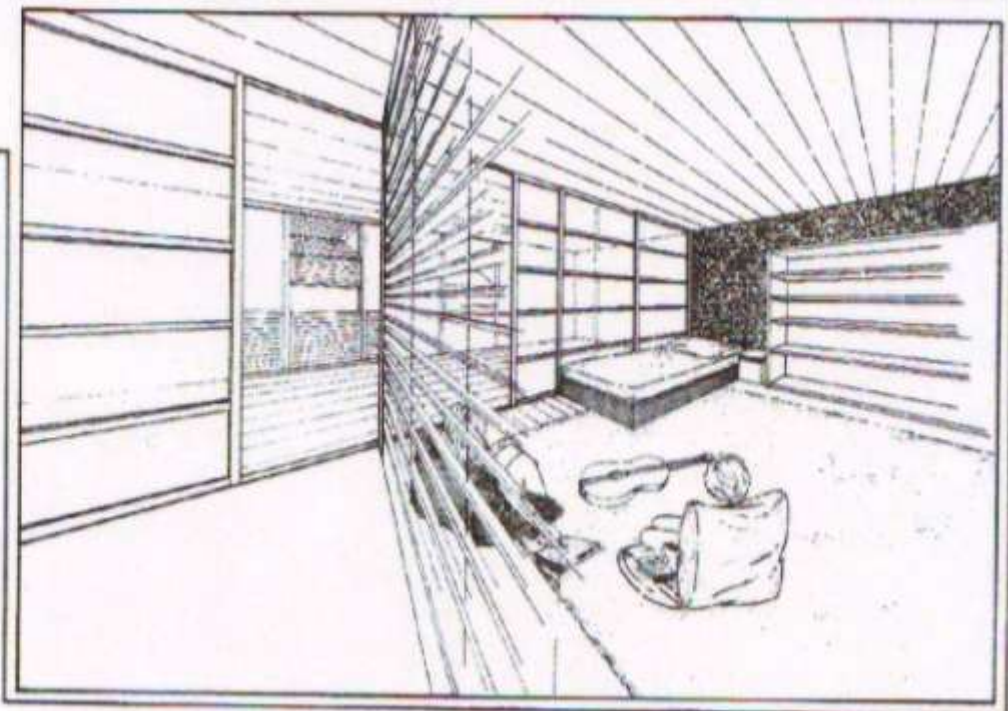
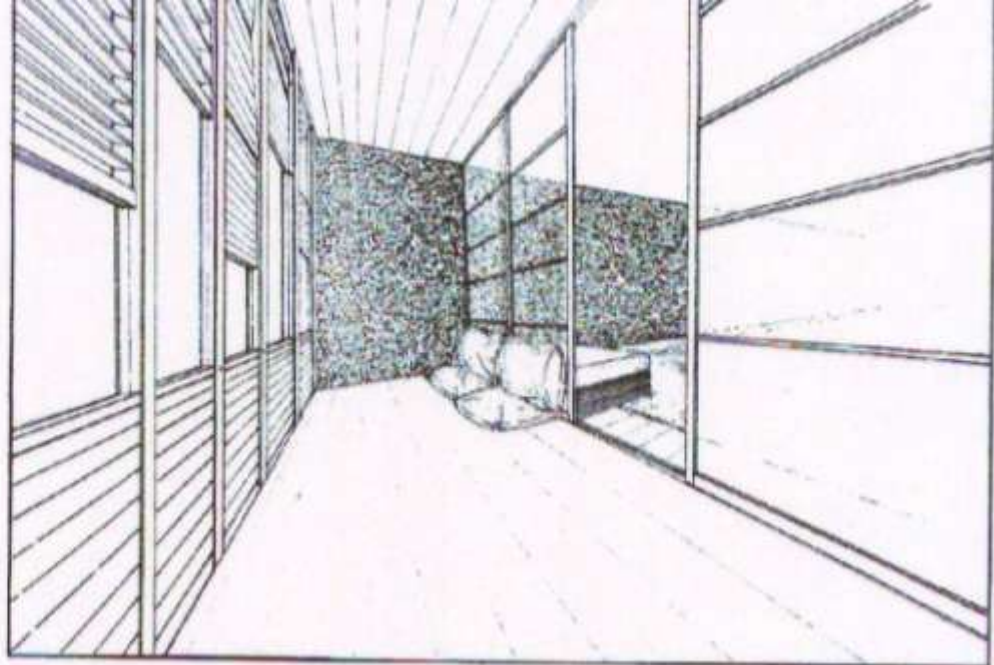
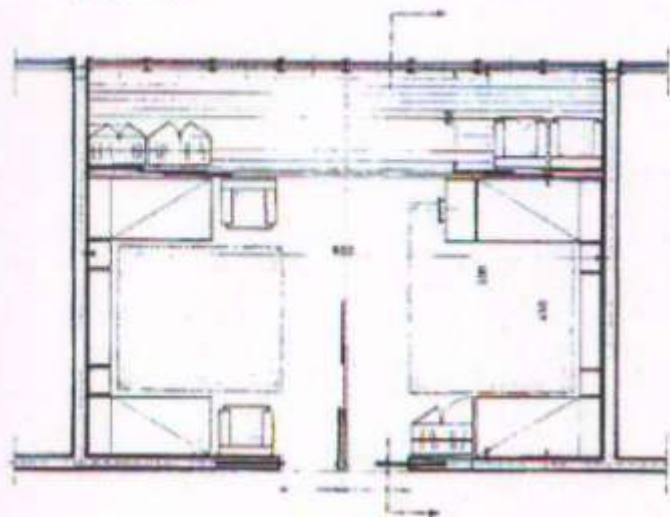


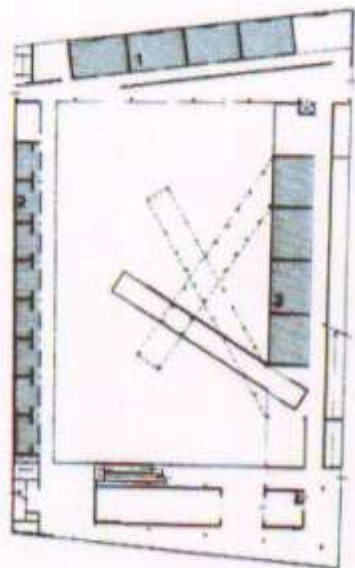
BECCA DI RINFORZO
FRA LE DUE STRUTTURE

SCGIORNO comune

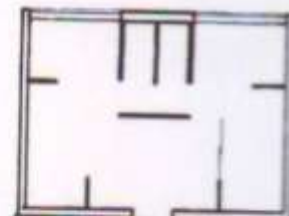
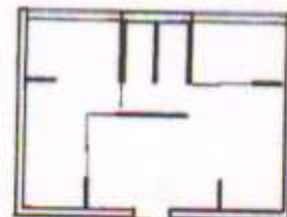
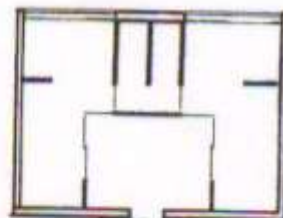
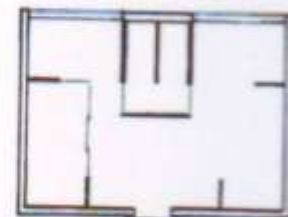
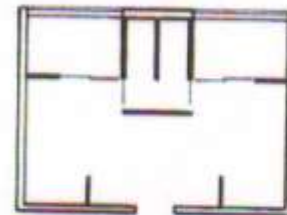
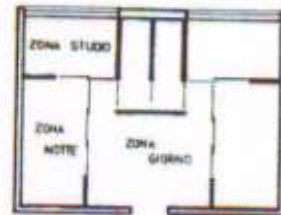
PIANTA CELLULA TIPO C

SCALA 1/50

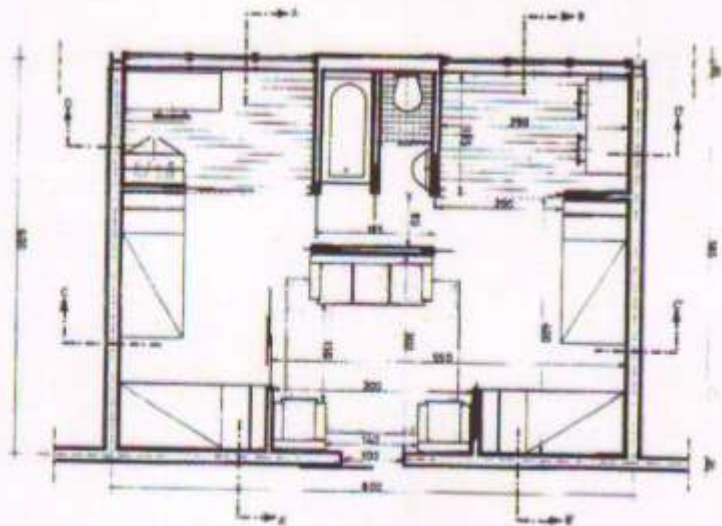




- 1 CELLULA TIPO A (4 POSTI LETTO)
- 2 " " B (2 " ")
- 3 " " C (4 " ")

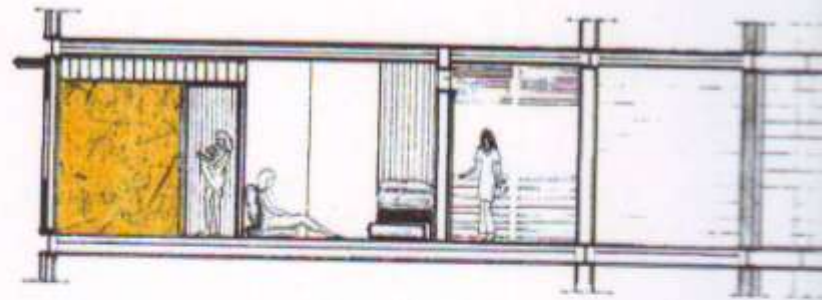


SCHEMI DI DIVERSA FRUIZIONE - CELLULA TIPO A

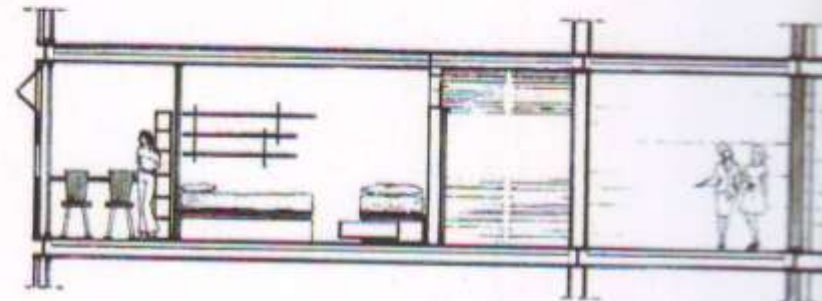


PIANTA CELLULA tipo A

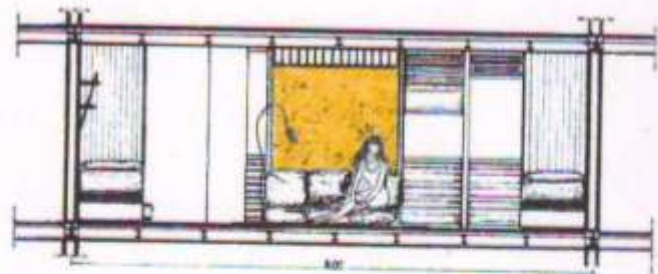
-SCALA 1:50-



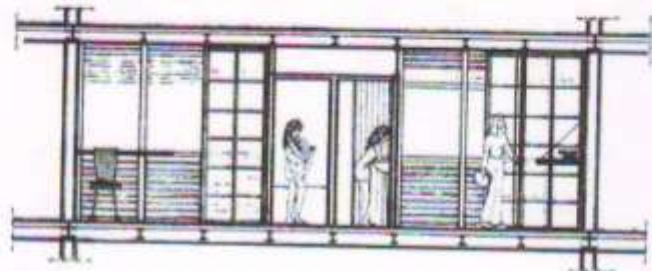
SEZ. A-A



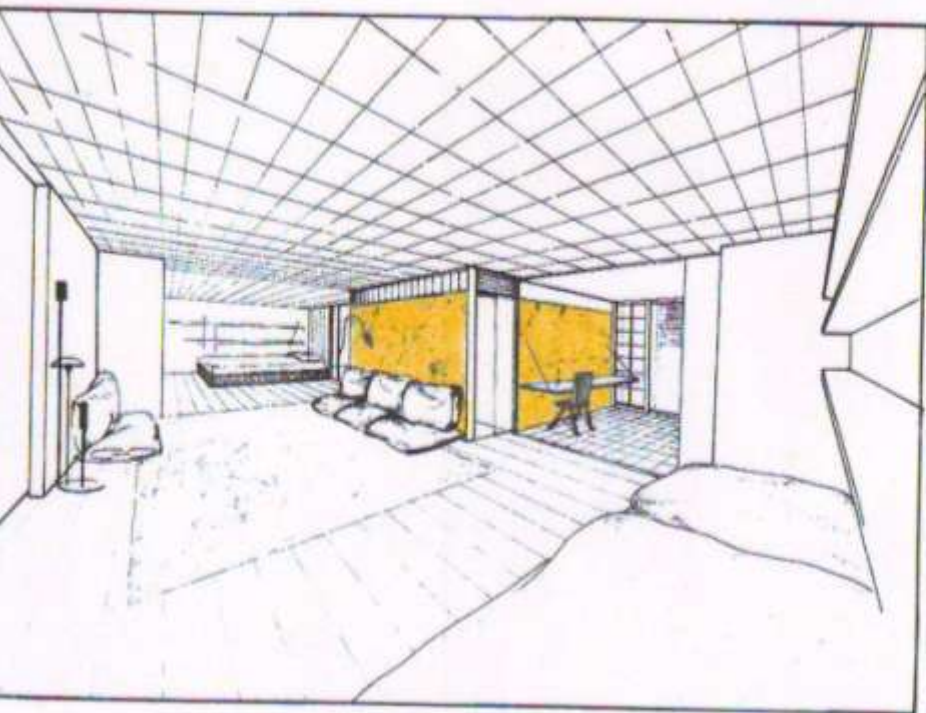
SEZ. B-B

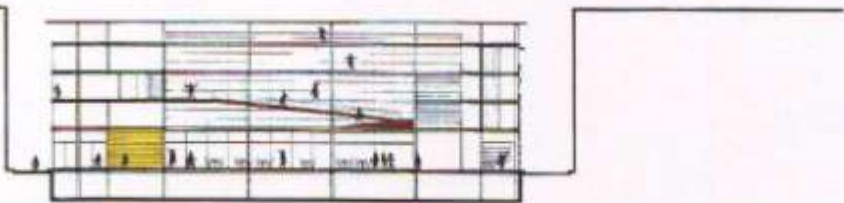


SEZ. C-C

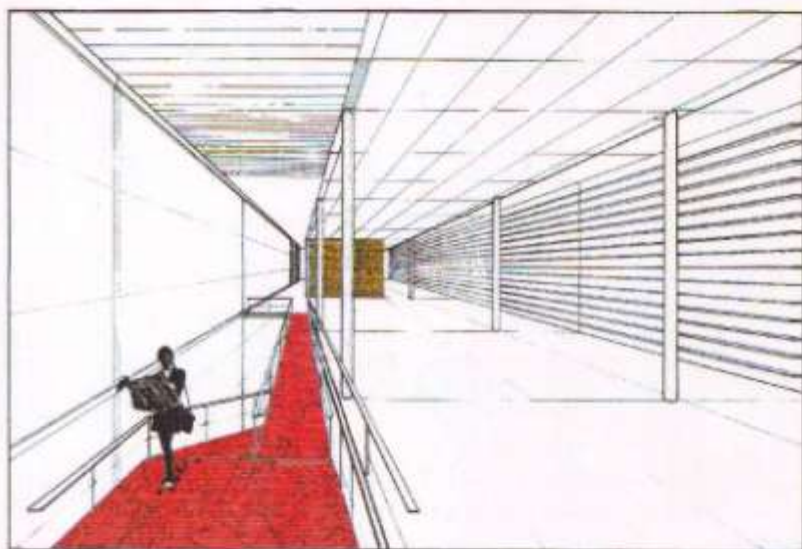


SEZ. D-D

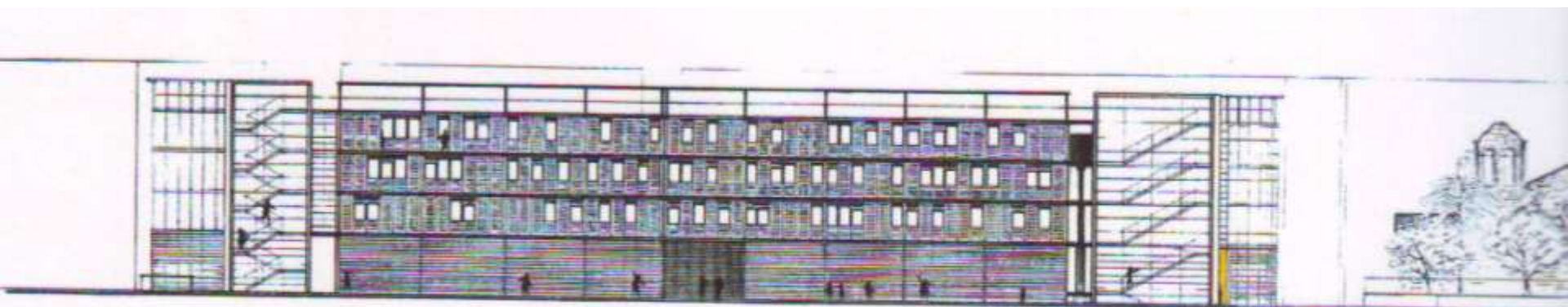




SEZ. TRASVERSALE 2-2 - SCALA 1:200 -



SEZ. LONGITUDINALE 3-3 - SCALA 1:200 -



PROSPETTO - CARRER DE LA REINA AMÀLIA - ESCALA



SCORCI PROSPETTICI: CARRER DE L'HORT DE LA BOMBA



PROSPETTO: CARRER DE L'HORT DE LA BOMBA - SCALA 1:200 -

