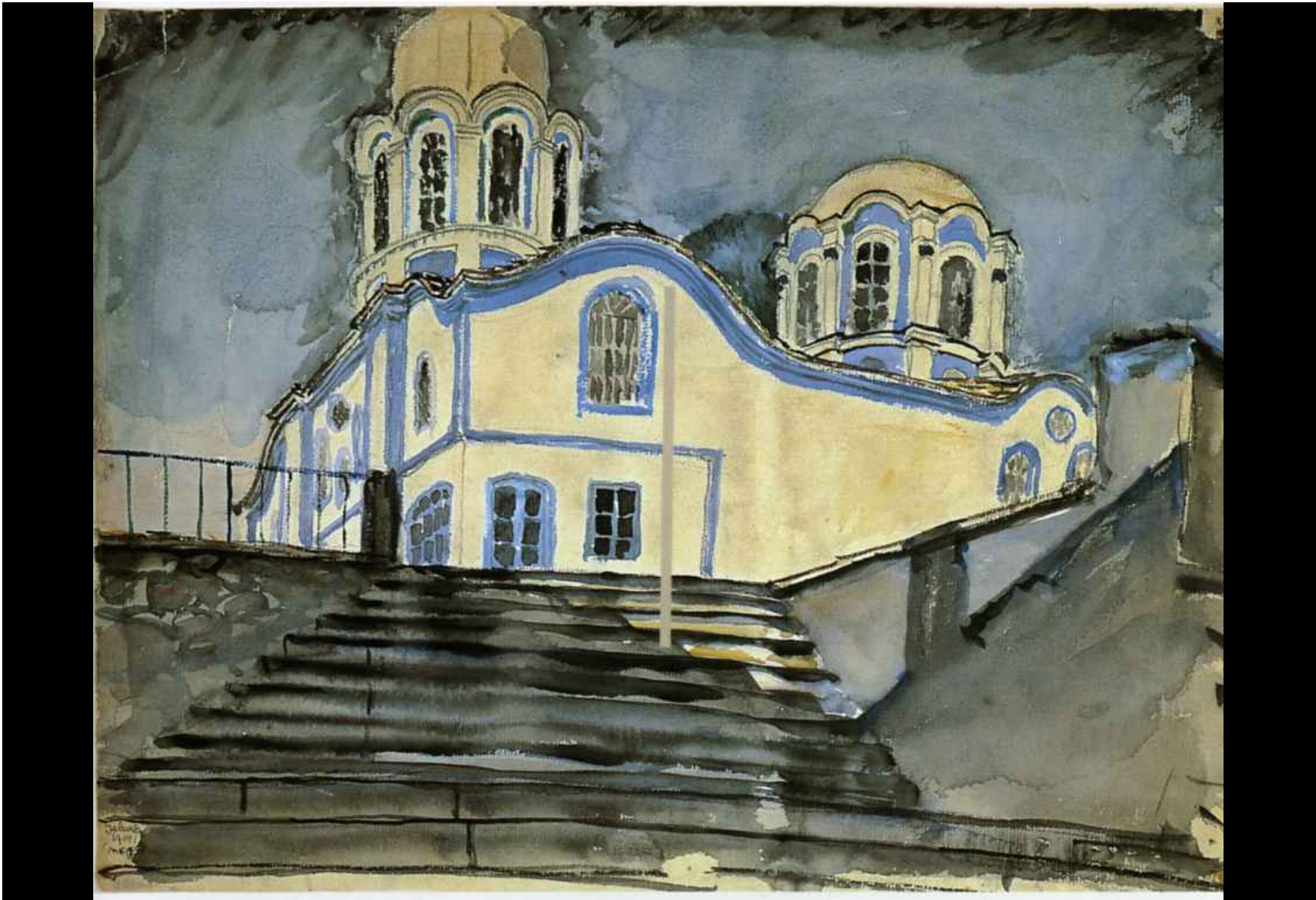


Opere esaminate nella lezione 8 (la Maison Dom-ino, la villa Schwob, e gli inizi del Purismo)



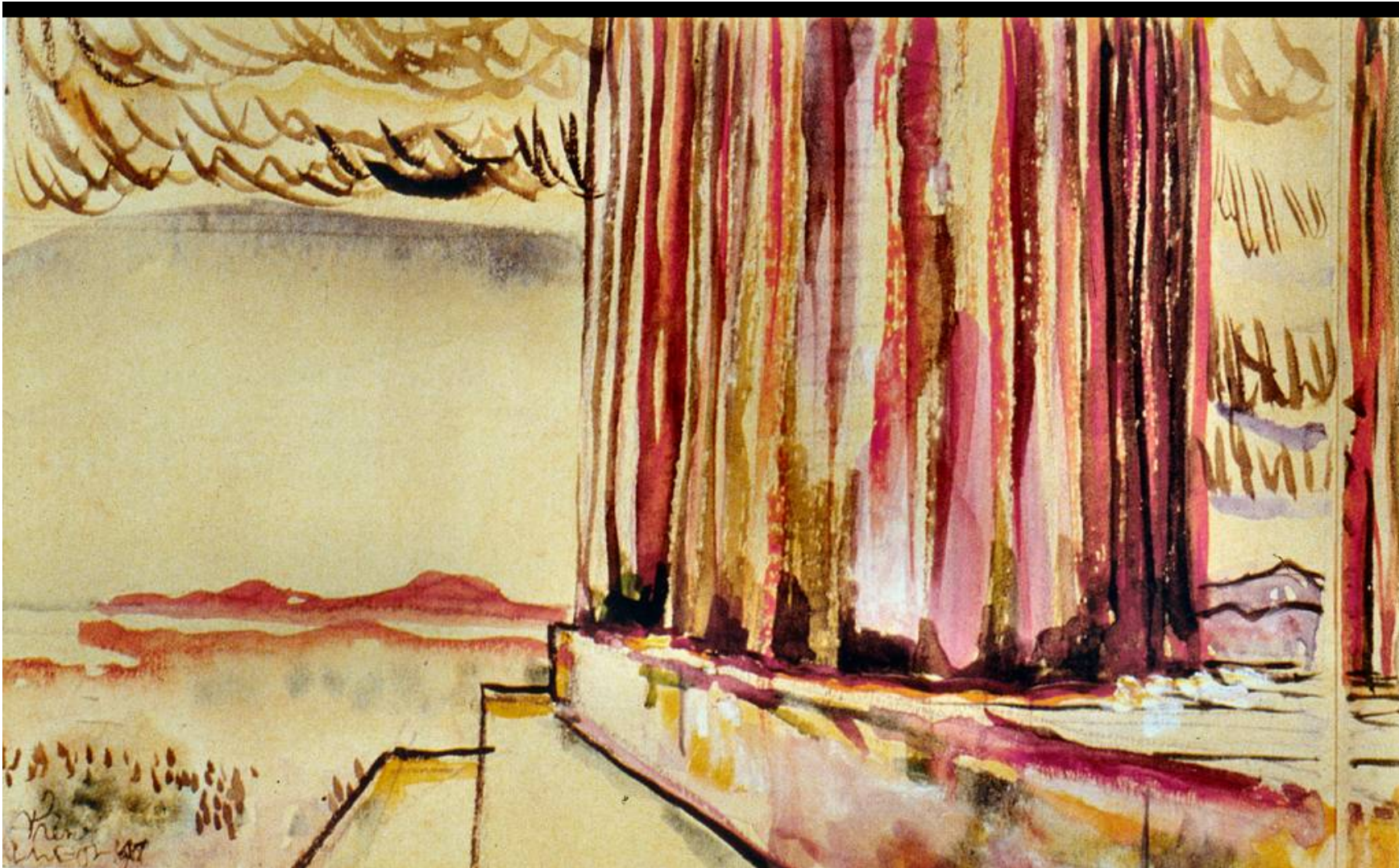
Ch.-E. Jeanneret (Le Corbusier), acquarello della chiesa di Gabrovo in Bulgaria (1911),
esposto nella serie “Le langage des pierres” nel 1912



Ch.-E. Jeanneret (Le Corbusier), acquarello del padiglione Sanssouci a Potsdam (1910), esposto nella serie “Le langage des pierres” nel 1912

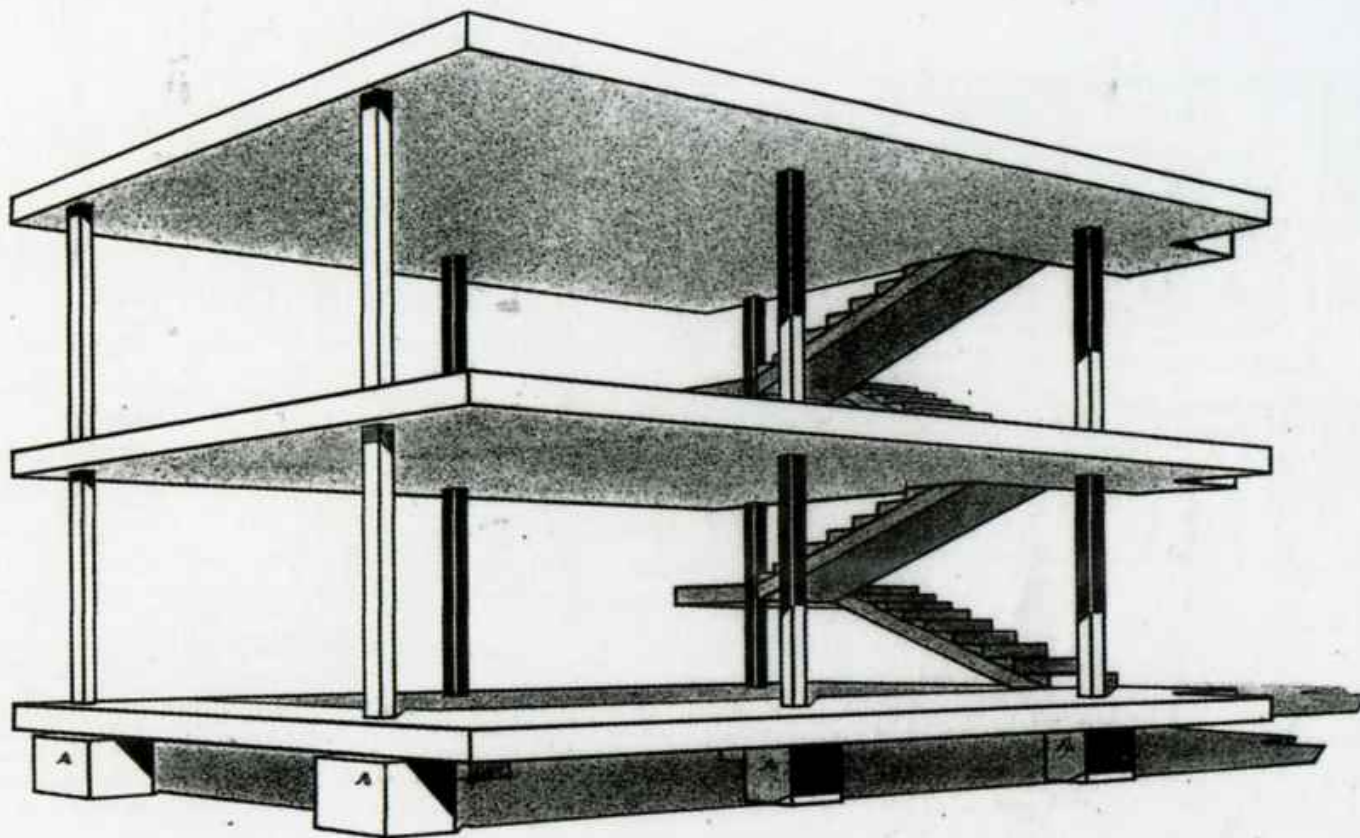


Ch.-E. Jeanneret (Le Corbusier), acquarello del Partenone (1911),
esposto nella serie “Le langage des pierres” nel 1912

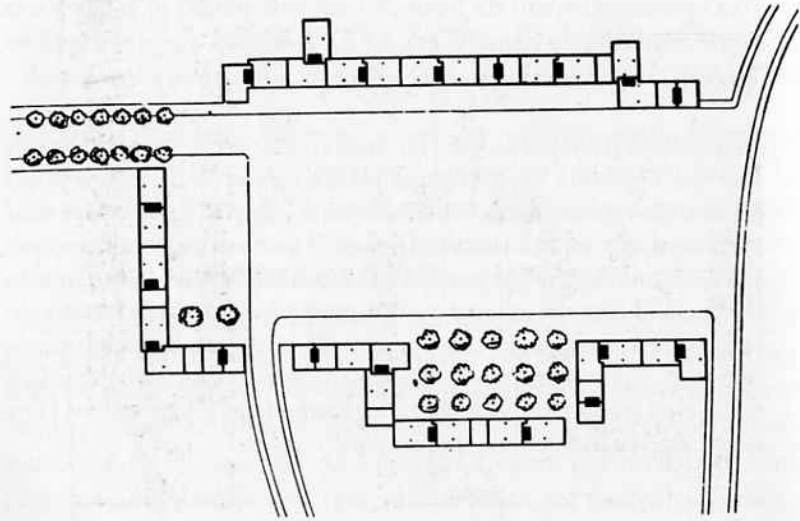
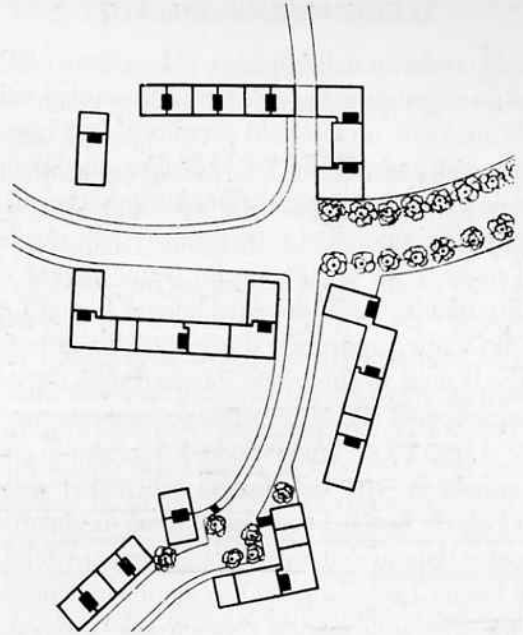


Ch.-E. Jeanneret (Le Corbusier), acquarello del Partenone (1911),
esposto nella serie “Le langage des pierres” nel 1912

Ch.-E. Jeanneret (Le Corbusier), disegno della cellula abitativa Dom-ino,
1915

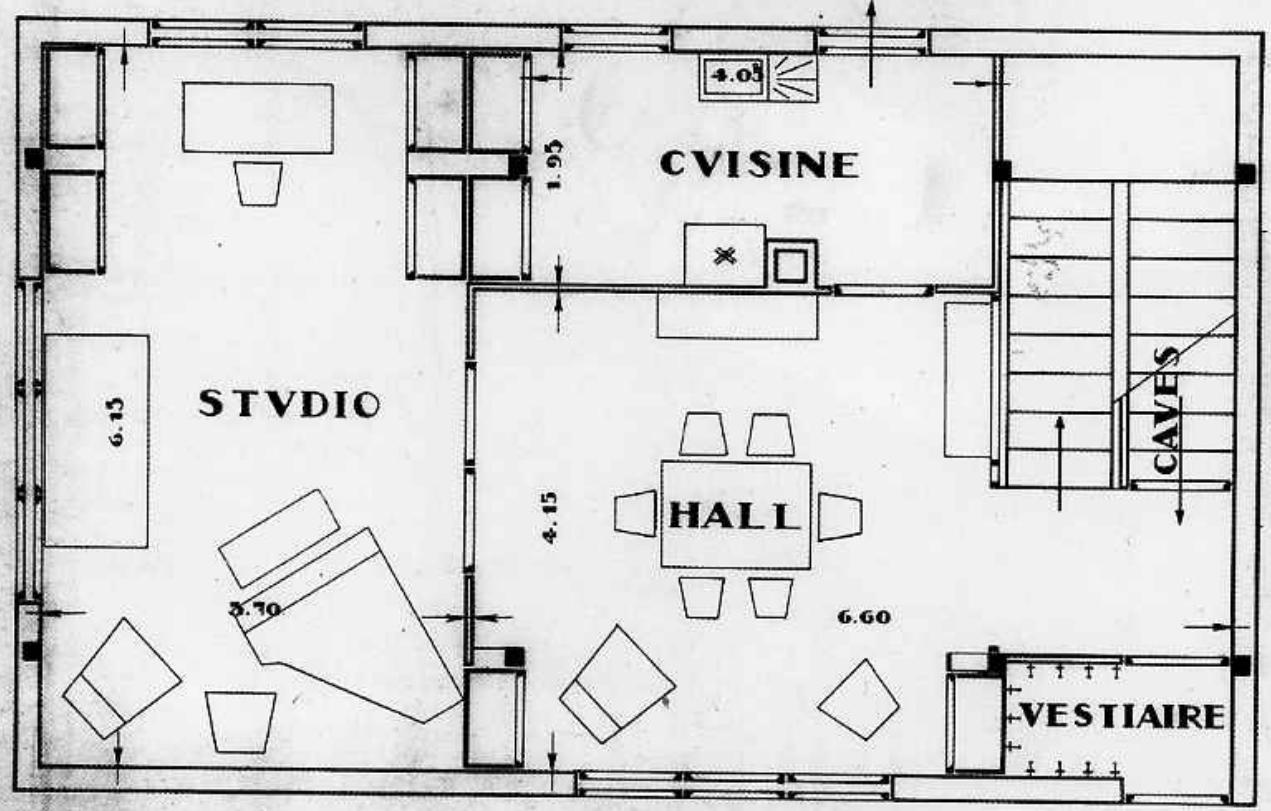


MONOLITHÉ-OSSATURE DE BÉTON ARMÉ
COULÉE SANS COFFRAGE
SUR SIX POINTS D'APPUI FOURNIS A.



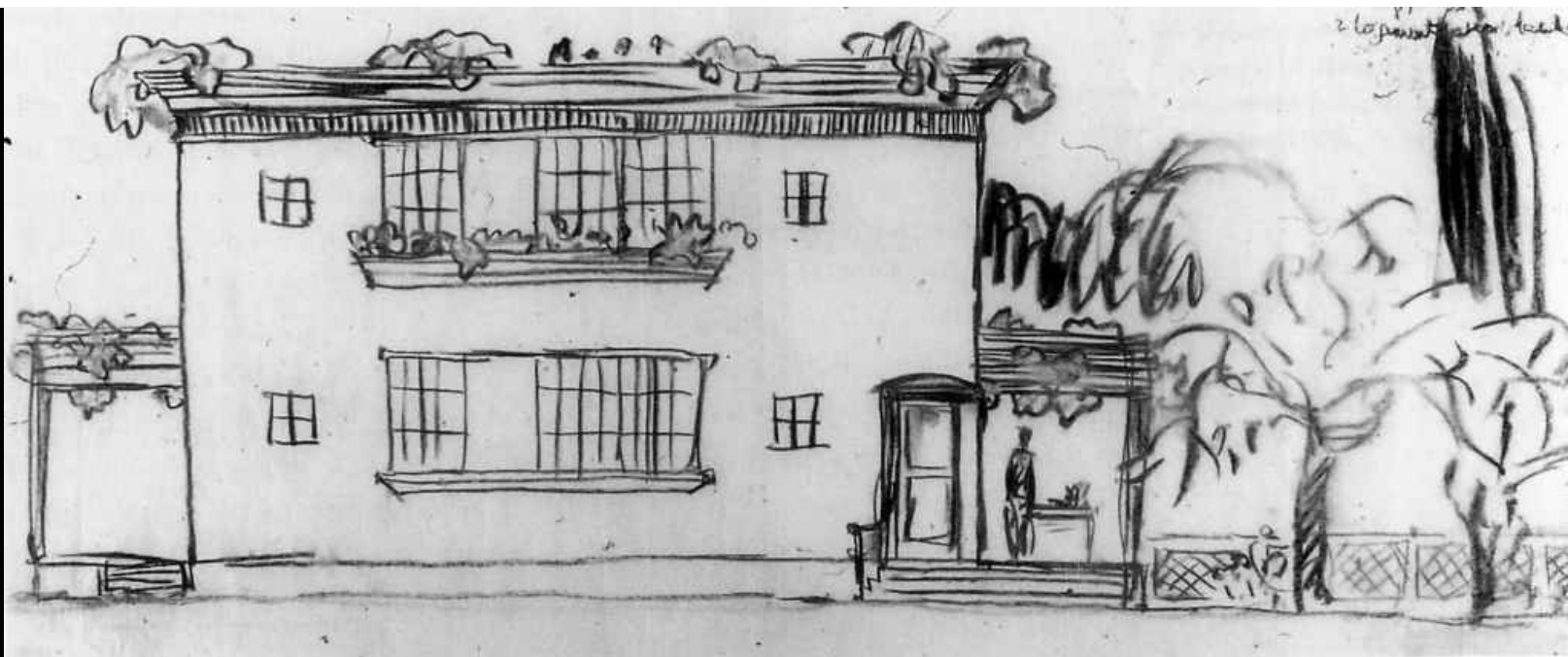
TYPE B. REZ-DE-CHAUSSÉE
ÉLÉVÉ

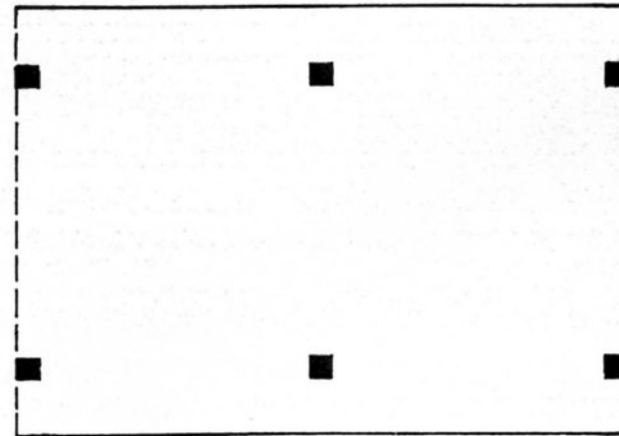
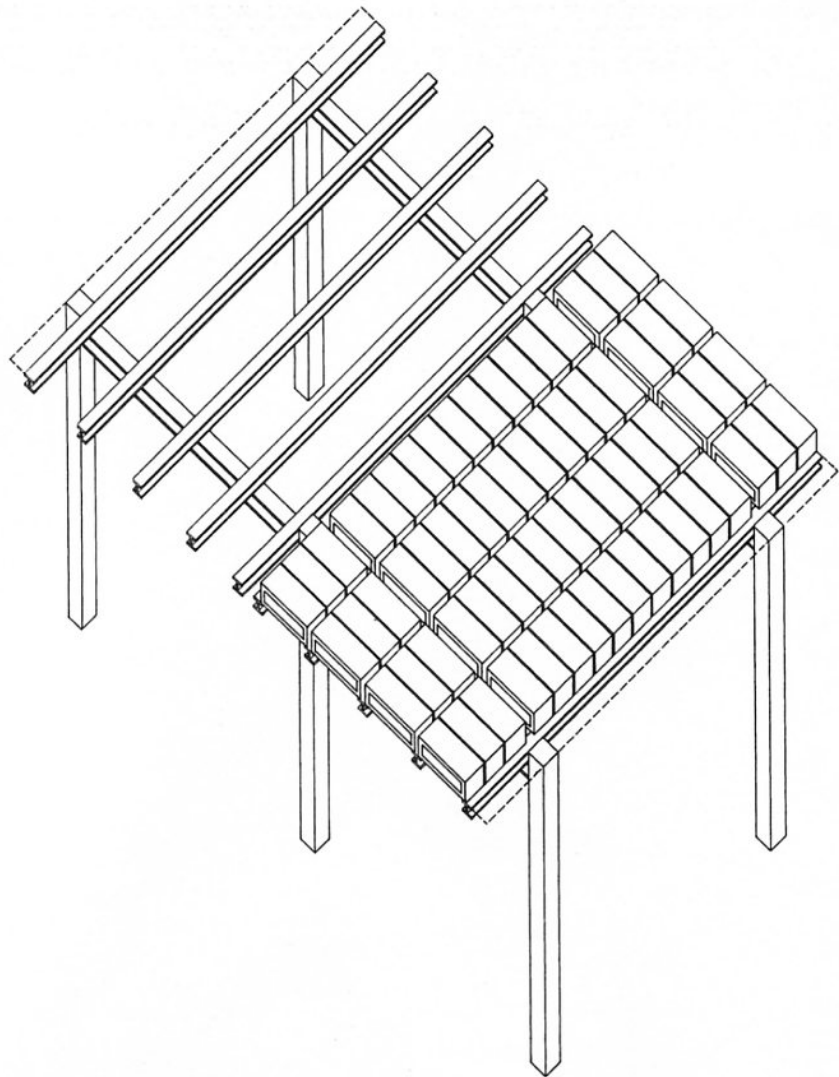
SORTIE SUR
LE POTAGER



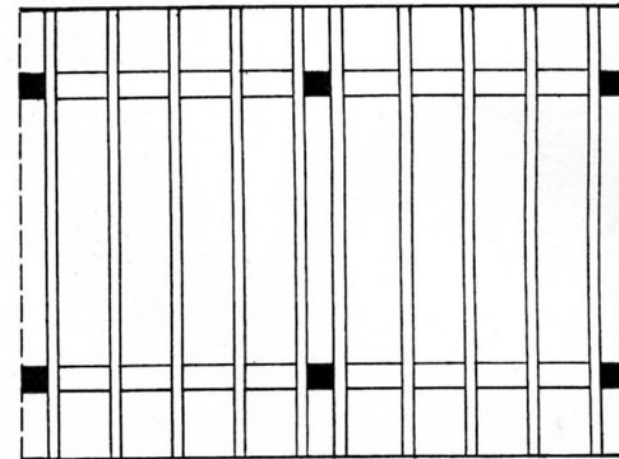
REZ-DE-CHAUSSÉE TYPE B.

ENTRÉE 19211

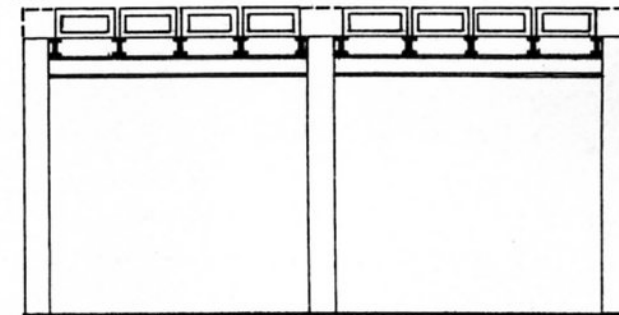




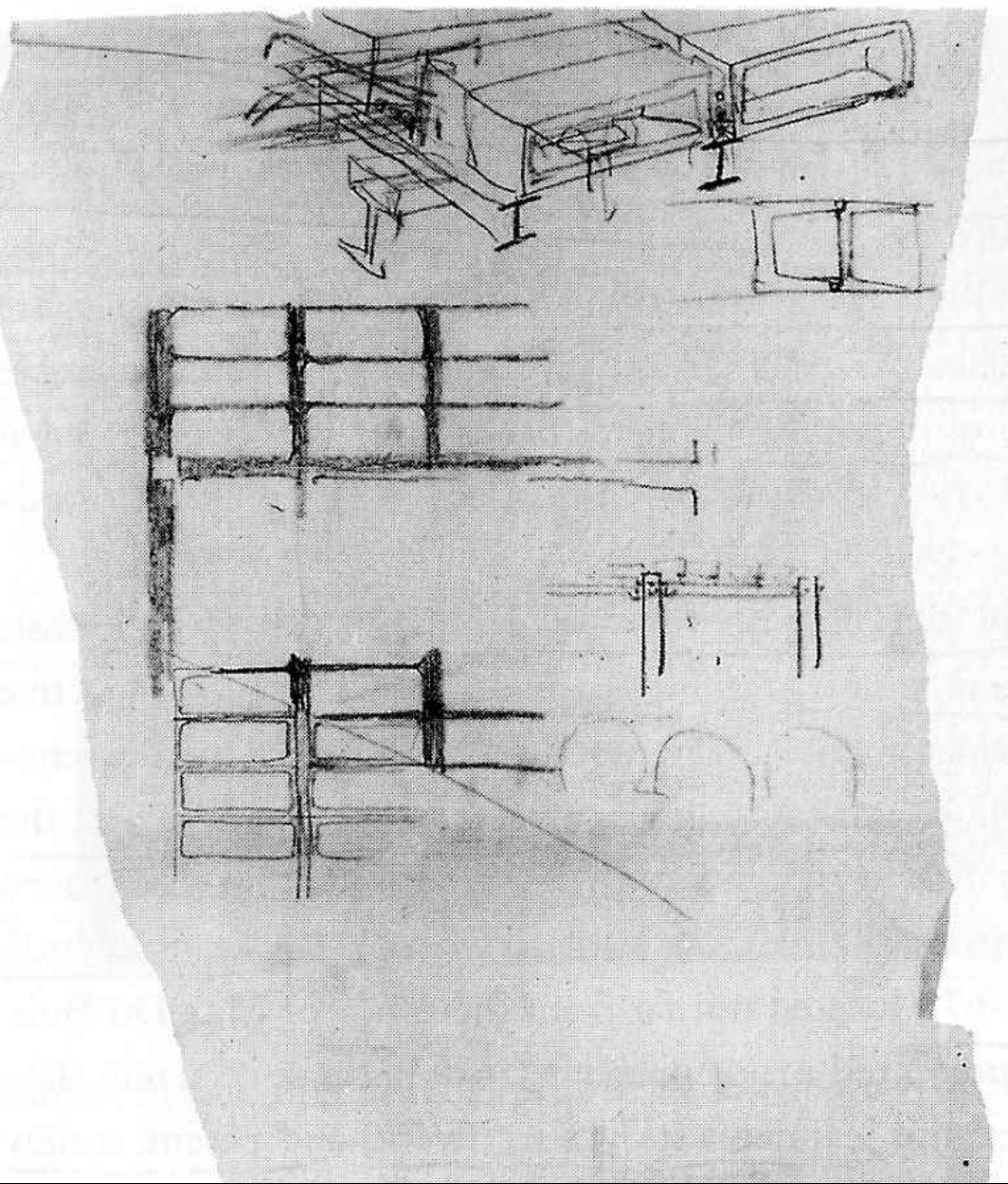
10

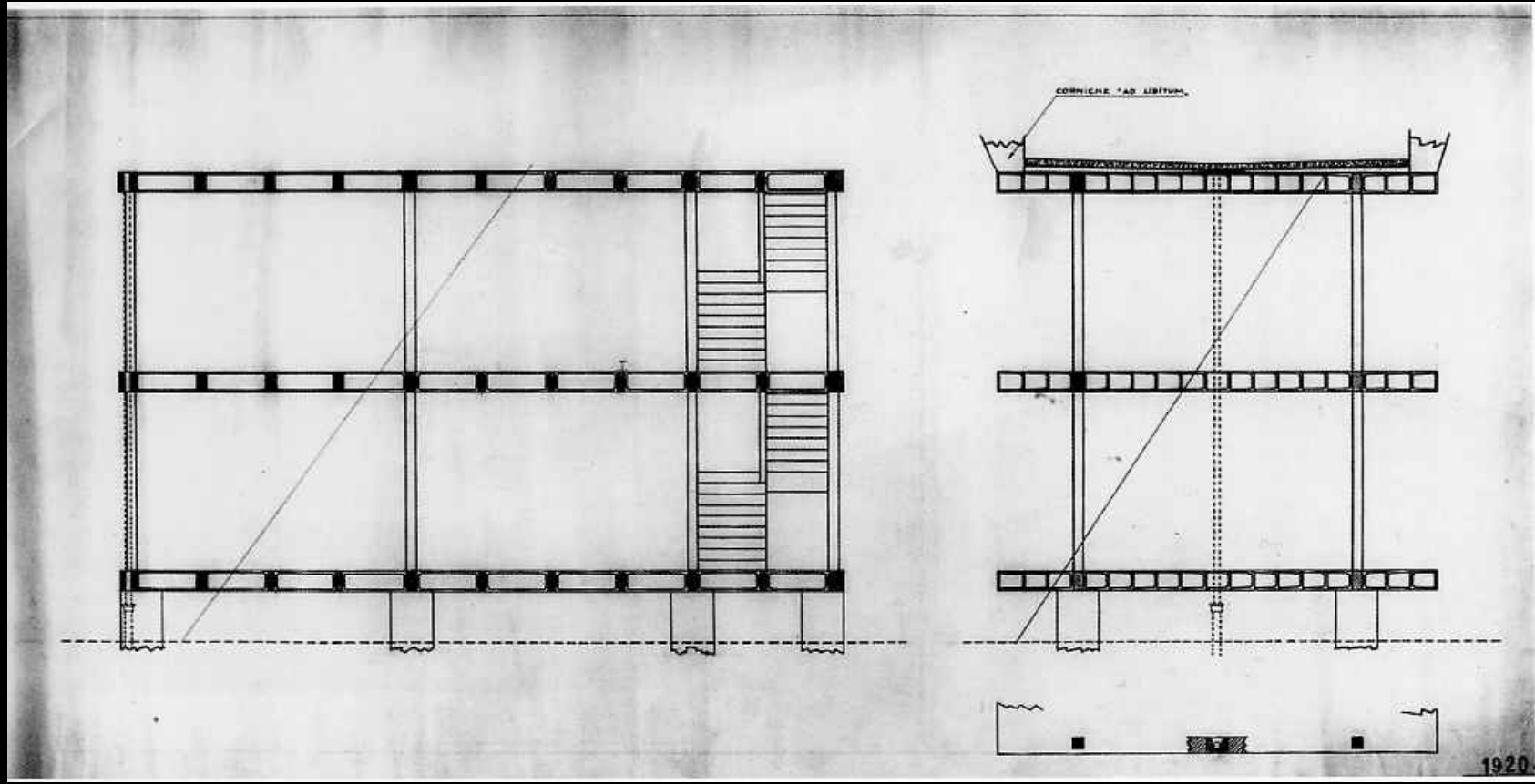


11



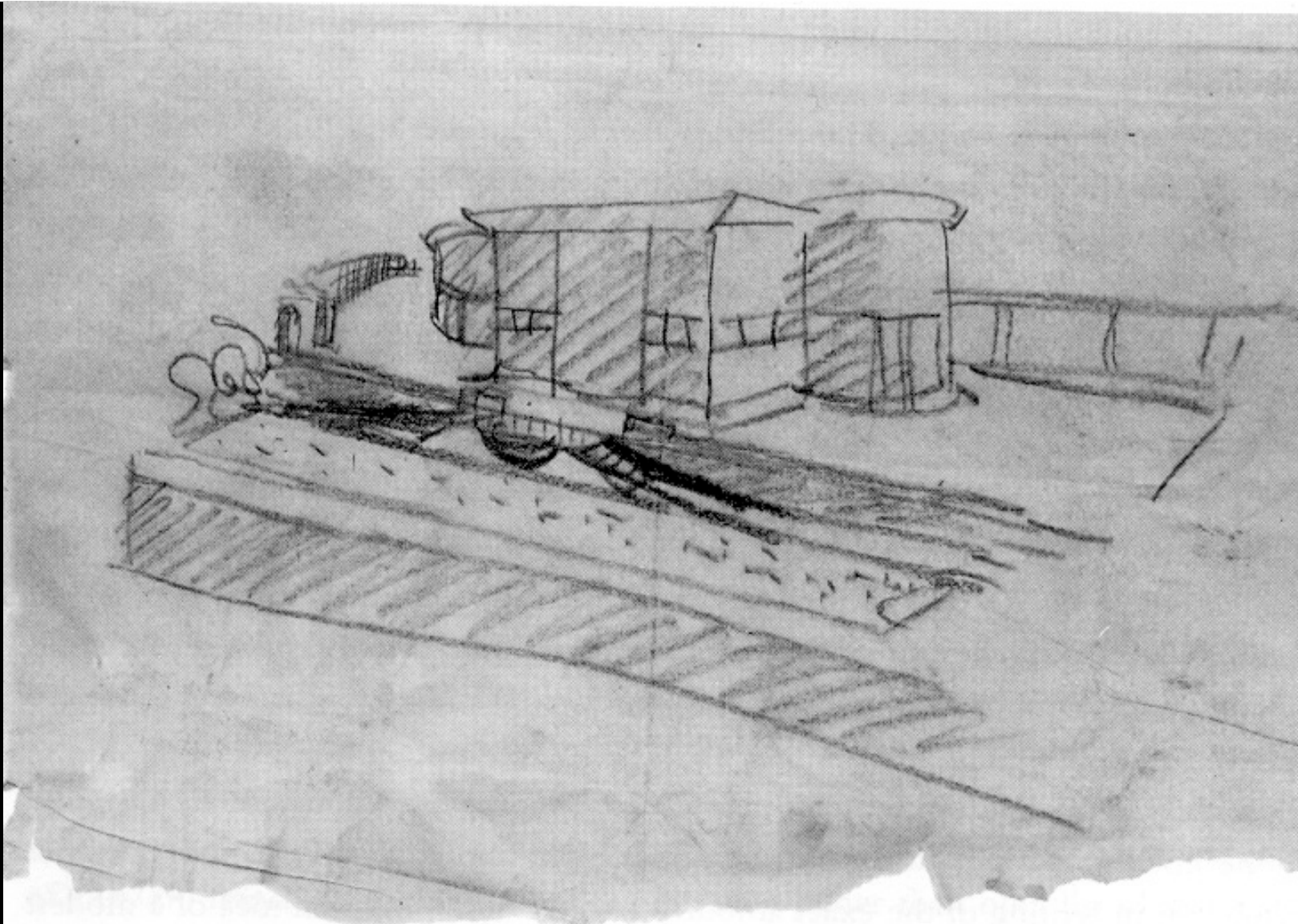
12



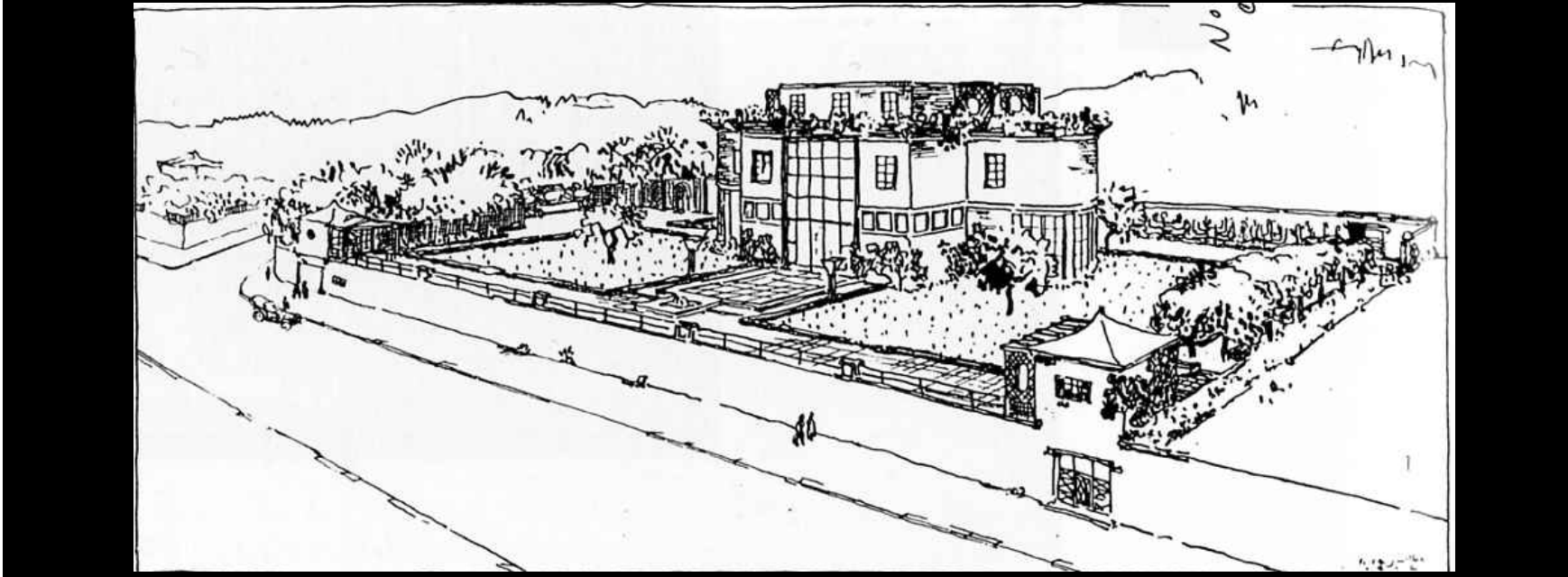
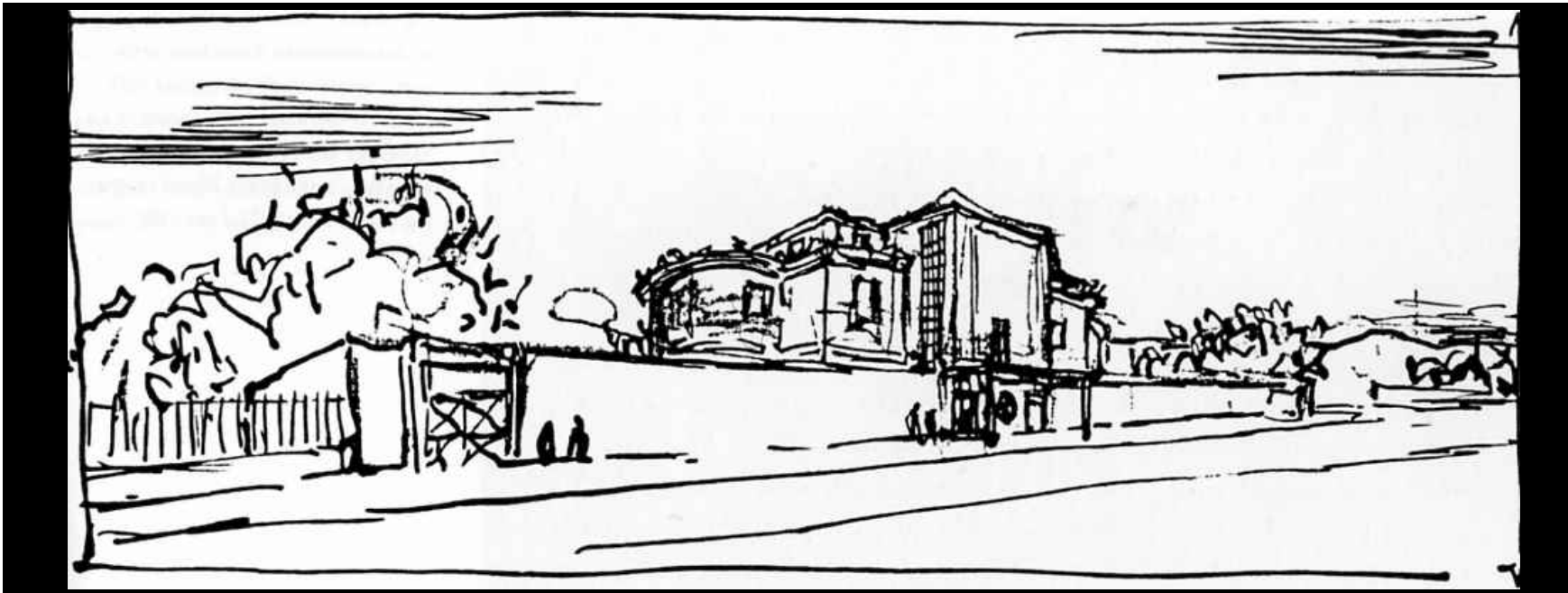




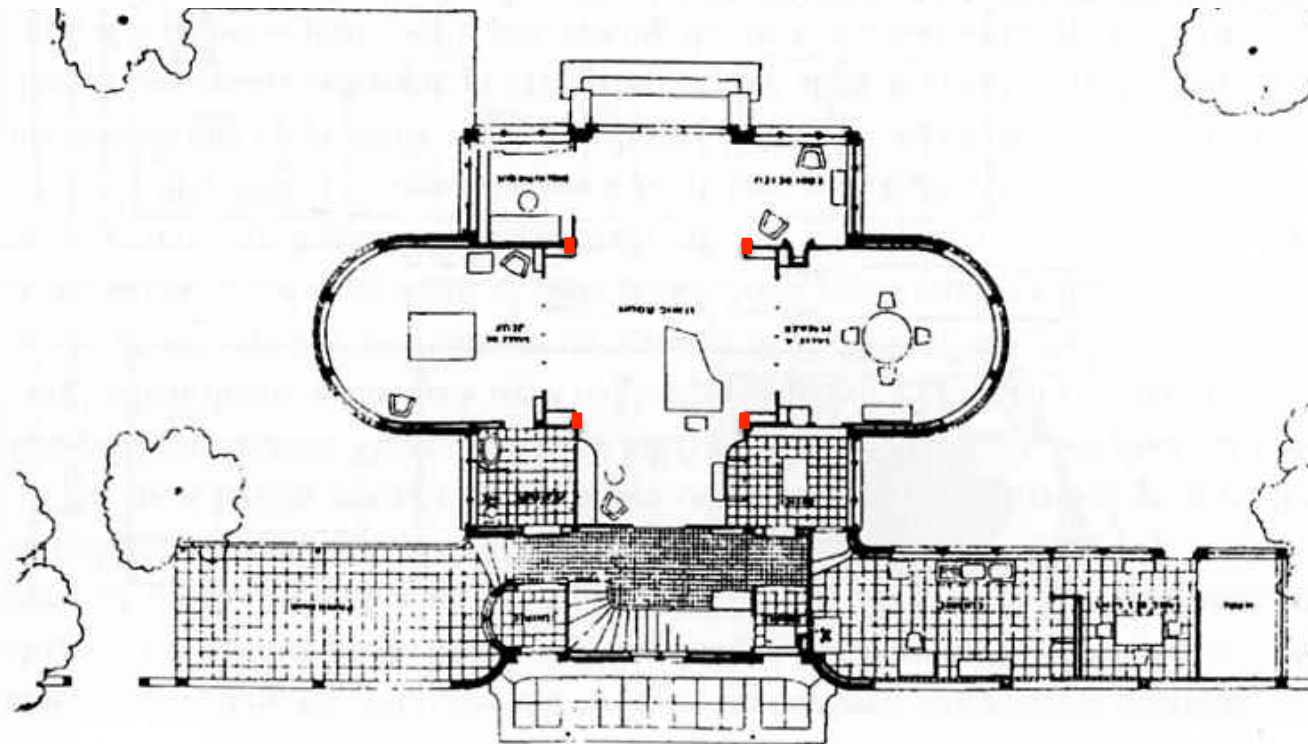
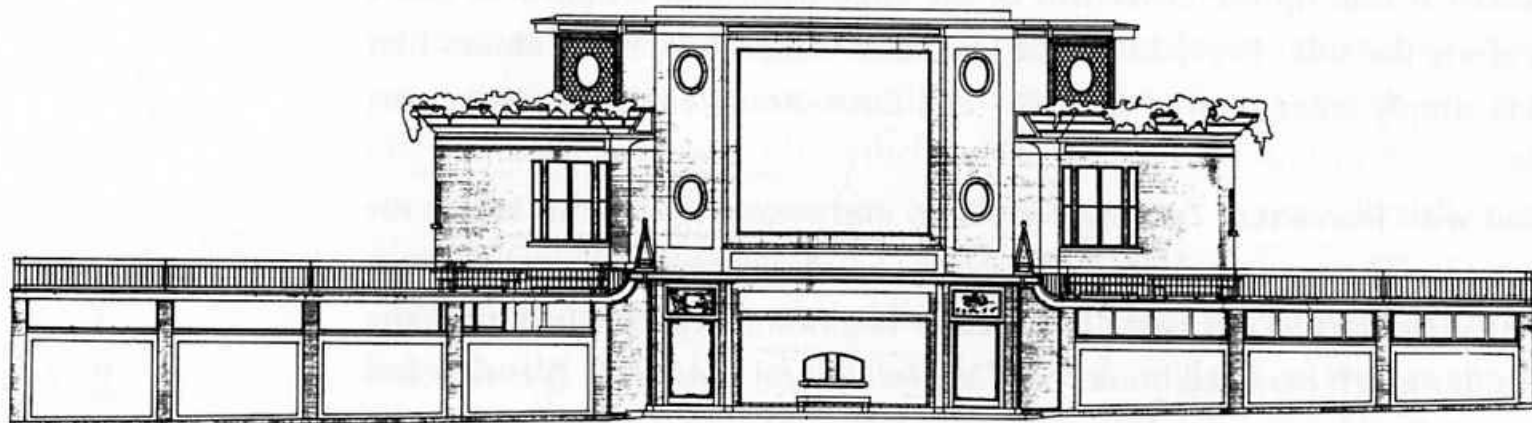




Ch.-E. Jeanneret (Le Corbusier), villa Schwob, 1916



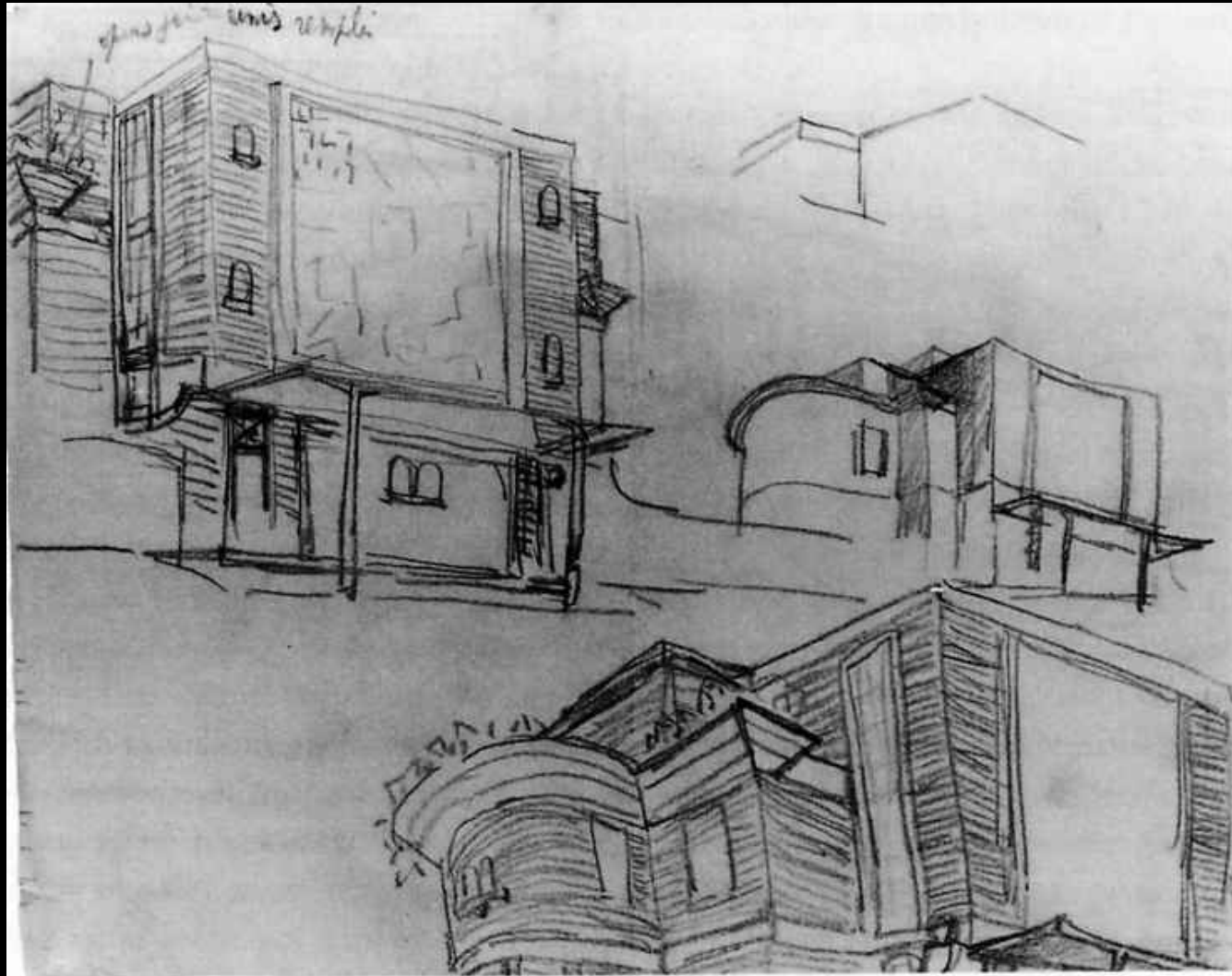


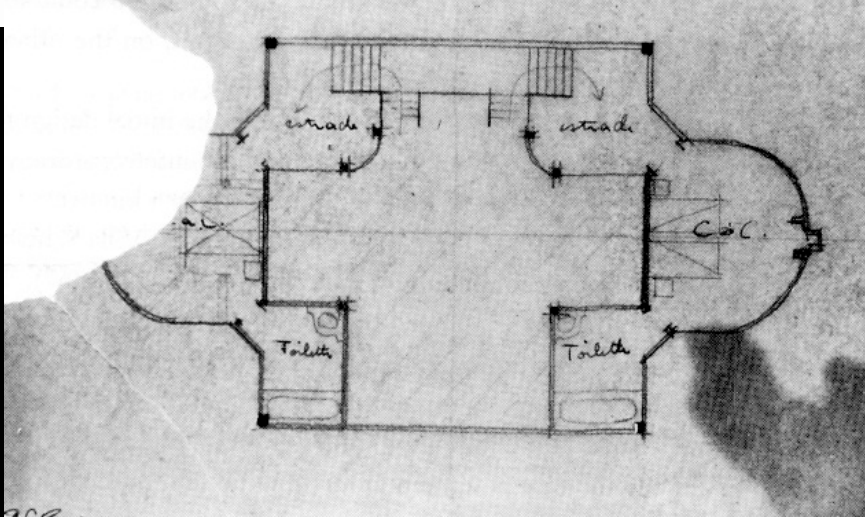
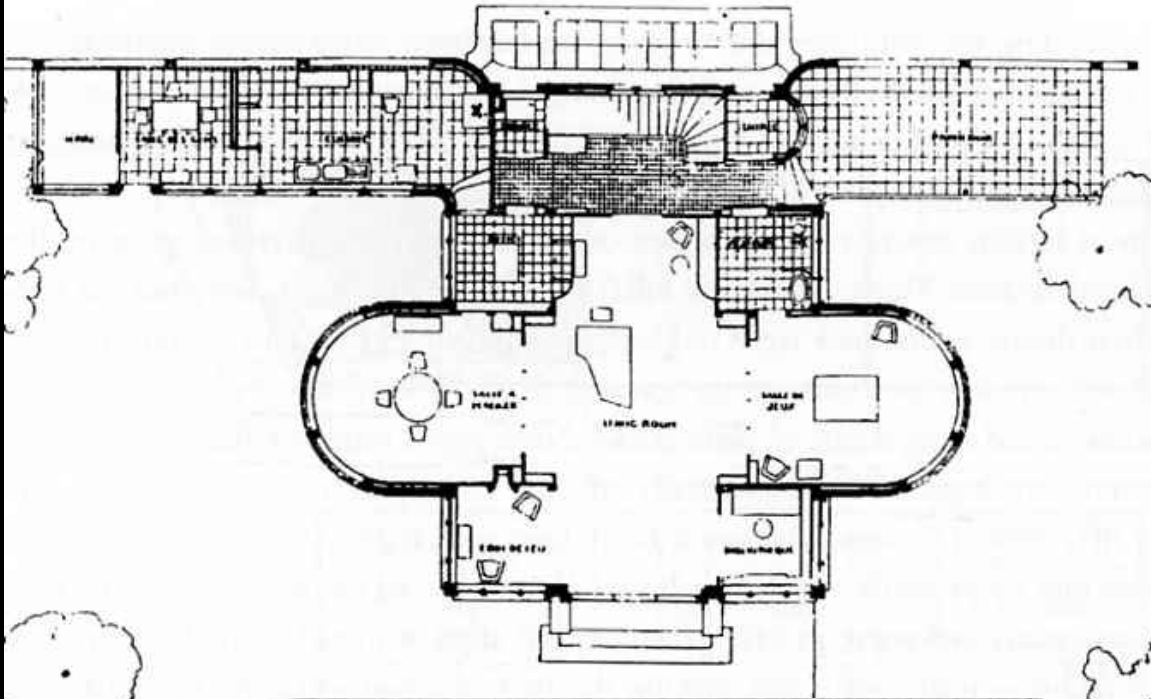










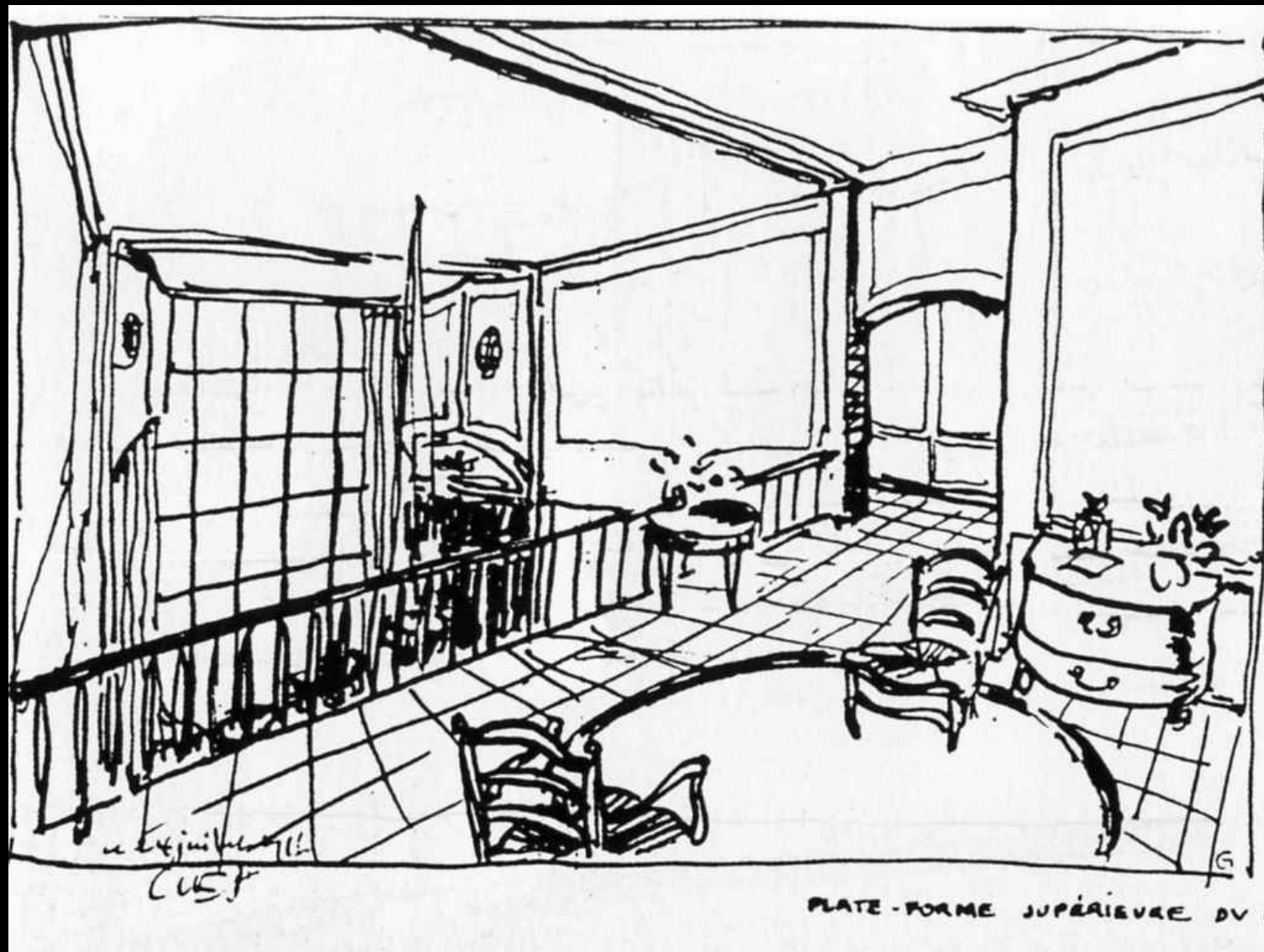






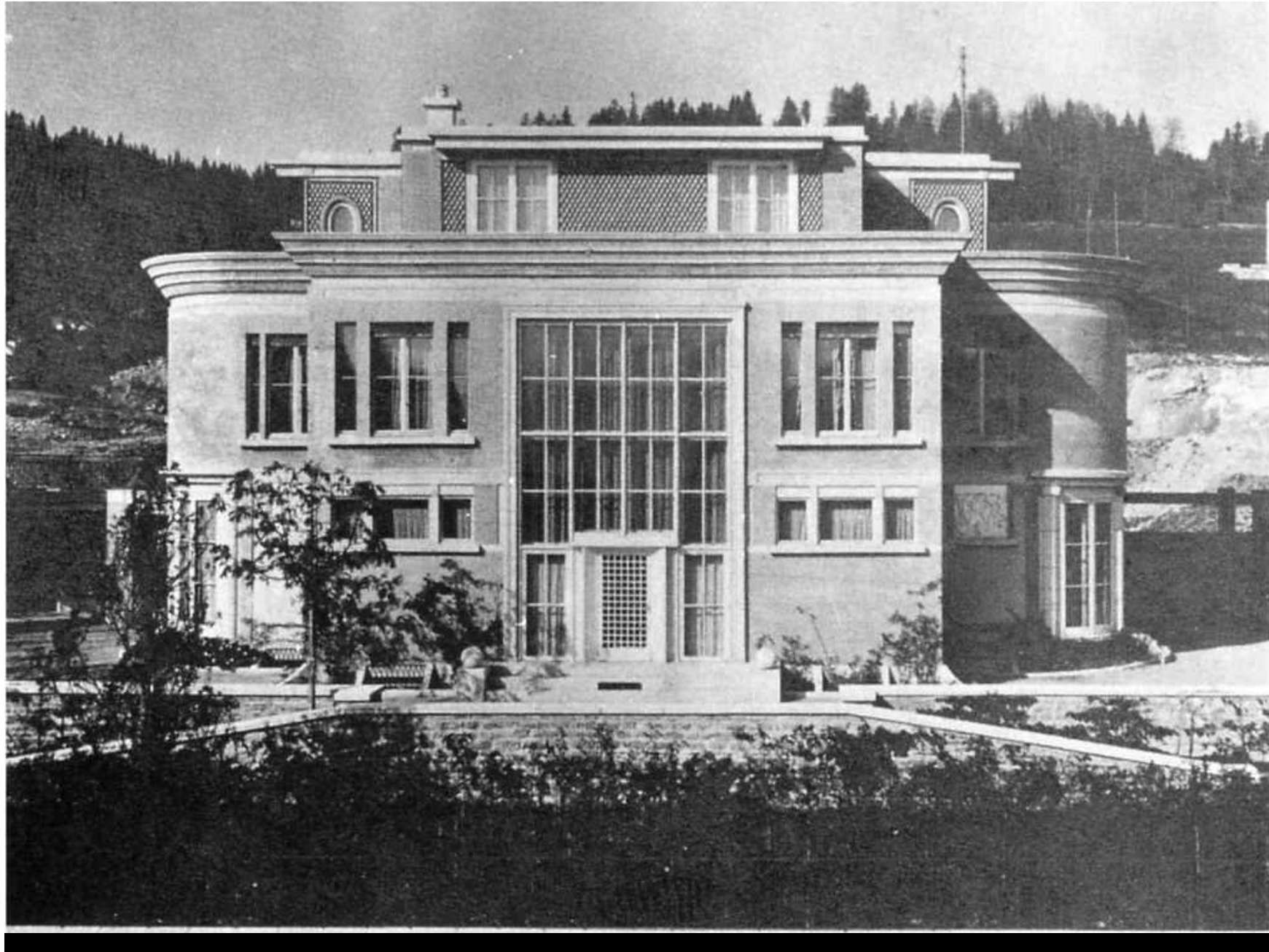






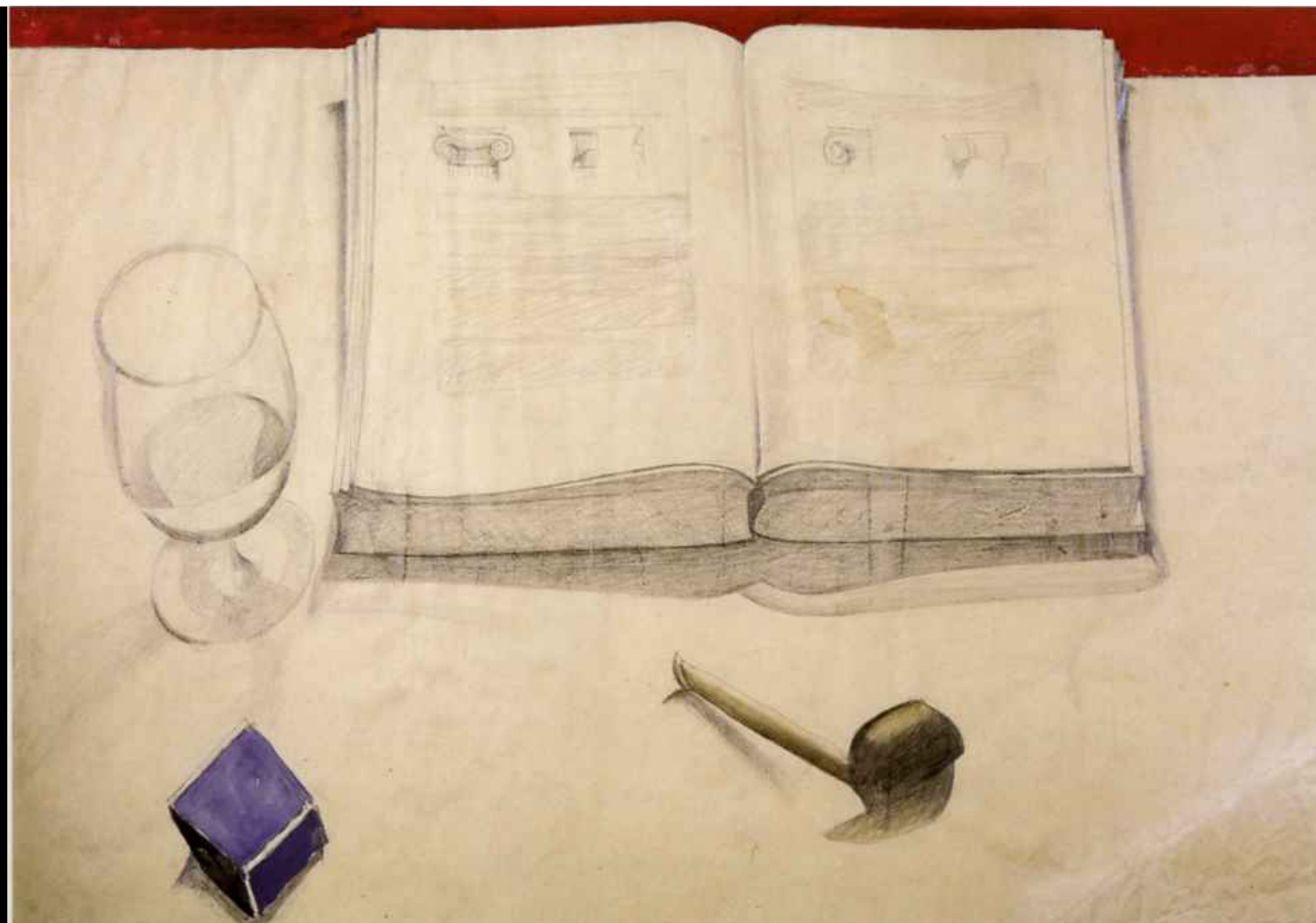
à l'extérieur
CUST

PLATE-FORME SUPÉRIEURE DV





Ch.-E. Jeanneret (Le Corbusier), *La cheminée*, olio su tela, 1918



Ch.-E. Jeanneret (Le Corbusier), *Natura morta con pipa, matita e acquarello su carta, 1919*



Ch.-E. Jeanneret (Le
Corbusier), *Le bol blanc*,
olio su tela, 1919



Ch.-E. Jeanneret (Le Corbusier), *Natura morta con pila di piatti*, olio su tela, 1920